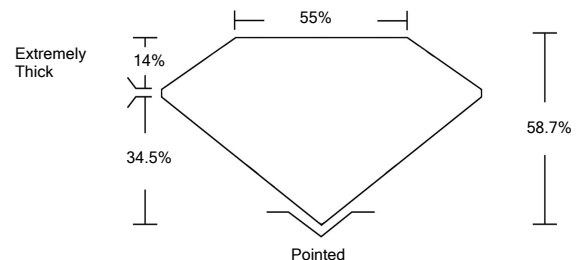




LG457073904

LABORATORY GROWN DIAMOND REPORT

PROPORTIONS



GRADING SCALES

Table with 5 columns for Color Grading Scale (CL to LT) and Clarity (10x) Grading Scale (FL to I).

The laboratory grown diamond described in this Report (Report) has been graded, tested, analyzed, examined and/or inscribed by International Gemological Institute (IGI). A laboratory grown diamond is one that has essentially the same chemical, physical and optical properties as a mined diamond...

© INTERNATIONAL GEMOLOGICAL INSTITUTE, INC.

01/15/2021

IGI Report Number LG457073904

Shape and Cutting Style SQUARE EMERALD CUT

Measurements 6.44 x 6.37 x 3.74 mm

GRADING RESULTS

Carat Weight 1.59 CARAT

Color Grade G

Clarity Grade VS 2

01/15/2021

IGI Report Number LG457073904

Shape and Cutting Style SQUARE EMERALD CUT

Measurements 6.44 x 6.37 x 3.74 mm

GRADING RESULTS

Carat Weight 1.59 CARAT

Color Grade G

Clarity Grade VS 2

ADDITIONAL GRADING INFORMATION

Polish EXCELLENT

Symmetry VERY GOOD

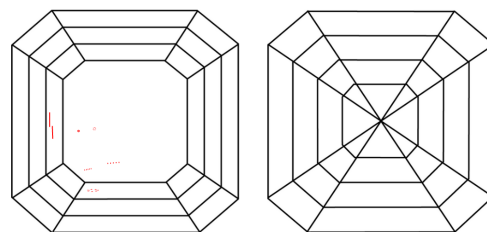
Fluorescence NONE

Inscription(s) LABGROWN IGI LG457073904

Comments: As Grown - No indication of post-growth treatment.

This Laboratory Grown Diamond was created by Chemical Vapor Deposition (CVD) growth process. Type IIa

CLARITY CHARACTERISTICS



KEY TO SYMBOLS

Red symbols indicate internal characteristics. Green symbols indicate external characteristics.

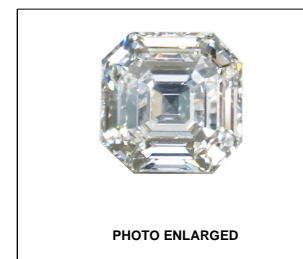
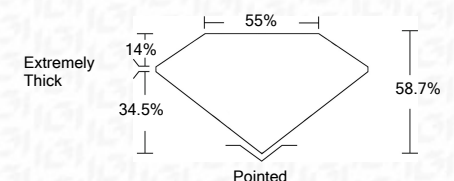


PHOTO ENLARGED

LABGROWN IGI LG457073904

LASERSCRIBESM



ADDITIONAL GRADING INFORMATION

Polish EXCELLENT

Symmetry VERY GOOD

Fluorescence NONE

Inscription(s) LABGROWN IGI LG457073904

Comments: As Grown - No indication of post-growth treatment.

This Laboratory Grown Diamond was created by Chemical Vapor Deposition (CVD) growth process. Type IIa



IGI

01/15/2021 IGI Report No. LG457073904 SQUARE EMERALD CUT 6.44 x 6.37 x 3.74 mm 1.59 CARAT G VS 2 58.7% 55% Extremely Thick Pointed EXCELLENT VERY GOOD NONE LABGROWN IGI LG457073904

As Grown - No indication of post-growth treatment. This Laboratory Grown Diamond was created by Chemical Vapor Deposition (CVD) growth process. Type IIa