



494178667

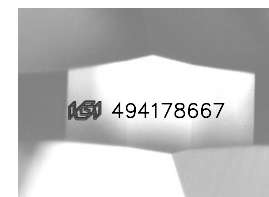
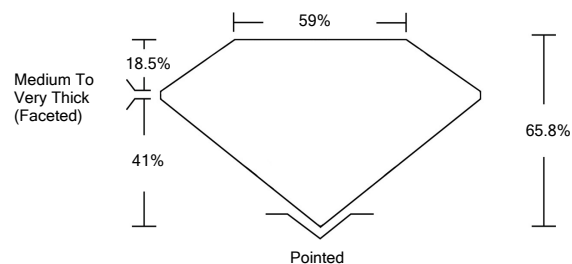
DIAMOND REPORT **ELECTRONIC COPY**

September 20, 2021
 IGI Report Number 494178667
 Description NATURAL DIAMOND
 Shape and Cutting Style PEAR BRILLIANT
 Measurements 9.86 x 5.91 x 3.89 mm

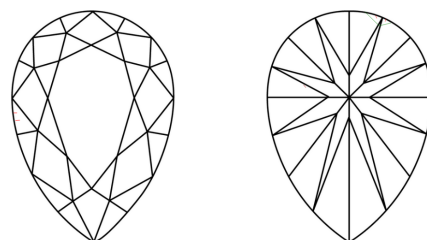
GRADING RESULTS
 Carat Weight 1.51 CARAT
 Color Grade J
 Clarity Grade VVS 1

ADDITIONAL GRADING INFORMATION
 Polish - Symmetry VERY GOOD
 Proportions VERY GOOD
 Fluorescence VERY SLIGHT
 Inscription(s) IGI 494178667

PROPORTIONS



CLARITY CHARACTERISTICS



KEY TO SYMBOLS

Red symbols indicate internal characteristics.
 Green symbols indicate external characteristics.

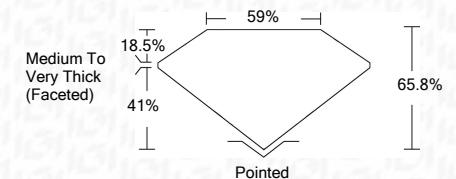
COLOR

D - F	G - J	K - M	N - R	S - Z	FANCY
Colorless	Near Colorless	Slightly Tinted	Very Light Color	Light Color	

CLARITY

IF	VS ¹⁻²	VS ¹⁻²	SI ¹⁻²	I ¹⁻³
Internally Flawless	Very Very Slightly Included	Very Slightly Included	Slightly Included	Included

September 20, 2021
 IGI Report Number 494178667
 Description NATURAL DIAMOND
 Shape and Cutting Style PEAR BRILLIANT
 Measurements 9.86 x 5.91 x 3.89 mm
GRADING RESULTS
 Carat Weight 1.51 CARAT
 Color Grade J
 Clarity Grade VVS 1



ADDITIONAL GRADING INFORMATION
 Polish - Symmetry VERY GOOD
 Proportions VERY GOOD
 Fluorescence VERY SLIGHT
 Inscription(s) IGI 494178667



September 20, 2021
 IGI Report No 494178667
 NATURAL DIAMOND
 PEAR BRILLIANT
 9.86 x 5.91 x 3.89 mm
 Carat Weight 1.51 CARAT
 Color Grade J
 Clarity Grade VVS 1
 Depth 65.8%
 Table 59%
 Girdle Medium To Very Thick (Faceted)
 Culet Pointed
 Pol - Sym VERY GOOD
 Proportions VERY GOOD
 Fluorescence VERY SLIGHT
 Inscription(s) IGI 494178667

