



508149317

DIAMOND REPORT **ELECTRONIC COPY**

December 29, 2021
 IGI Report Number 508149317
 Description NATURAL DIAMOND
 Shape and Cutting Style PEAR BRILLIANT
 Measurements 9.48 x 6.40 x 4.04 mm

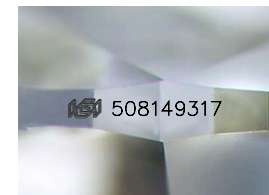
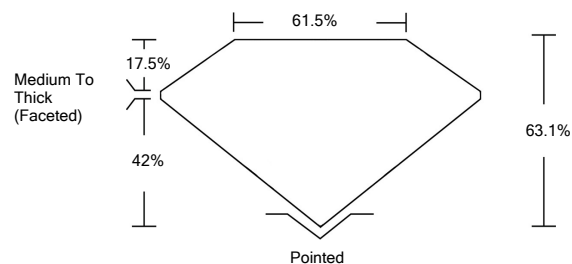
GRADING RESULTS

Carat Weight 1.52 CARAT
 Color Grade K
 Clarity Grade VS 2

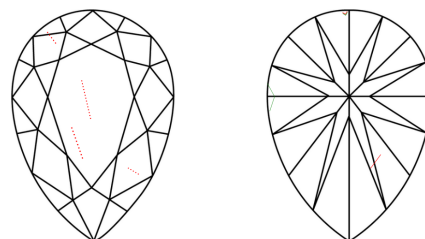
ADDITIONAL GRADING INFORMATION

Polish - Symmetry VERY GOOD
 Proportions VERY GOOD
 Fluorescence NONE
 Inscription(s) IGI 508149317

PROPORTIONS



CLARITY CHARACTERISTICS



KEY TO SYMBOLS

Red symbols indicate internal characteristics.
 Green symbols indicate external characteristics.

COLOR

D - F	G - J	K - M	N - R	S - Z	FANCY
Colorless	Near Colorless	Slightly Tinted	Very Light Color	Light Color	

CLARITY

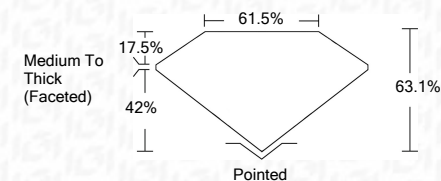
IF	VS ¹⁻²	VS ¹⁻²	SI ¹⁻²	I ¹⁻³
Internally Flawless	Very Very Slightly Included	Very Slightly Included	Slightly Included	Included



December 29, 2021
 IGI Report Number 508149317
 Description NATURAL DIAMOND
 Shape and Cutting Style PEAR BRILLIANT
 Measurements 9.48 x 6.40 x 4.04 mm

GRADING RESULTS

Carat Weight 1.52 CARAT
 Color Grade K
 Clarity Grade VS 2



ADDITIONAL GRADING INFORMATION

Polish - Symmetry VERY GOOD
 Proportions VERY GOOD
 Fluorescence NONE
 Inscription(s) IGI 508149317



IGI



December 29, 2021
 IGI Report No 508149317
 NATURAL DIAMOND
 PEAR BRILLIANT
 9.48 x 6.40 x 4.04 mm
 Carat Weight 1.52 CARAT
 Color Grade K
 Clarity Grade VS2
 Depth 63.1%
 Table 61.5%
 Girdle Medium To Thick (Faceted)
 Culet Pointed
 Pol - Sym VERY GOOD
 Proportions VERY GOOD
 Fluorescence NONE
 Inscription(s) IGI 508149317

