



517220556

DIAMOND REPORT **ELECTRONIC COPY**

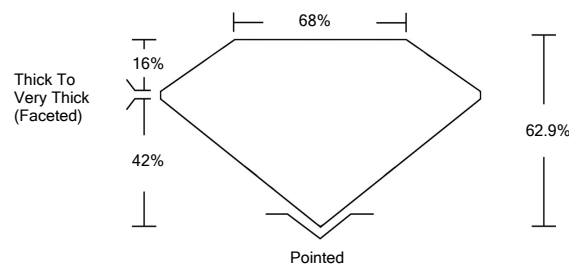
March 7, 2022
 IGI Report Number 517220556
 Description NATURAL DIAMOND
 Shape and Cutting Style HEART BRILLIANT
 Measurements 5.59 x 6.65 x 4.18 mm

GRADING RESULTS
 Carat Weight 1.01 CARAT
 Color Grade I
 Clarity Grade VVS 2

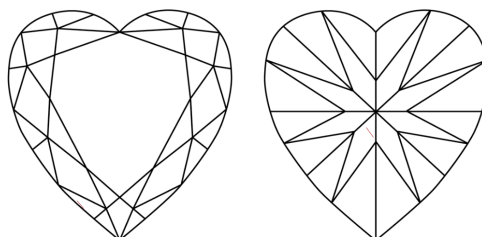
ADDITIONAL GRADING INFORMATION
 Polish - Symmetry VERY GOOD
 Proportions VERY GOOD
 Fluorescence VERY SLIGHT
 Inscription(s) IGI 517220556



PROPORTIONS

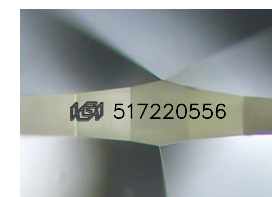


CLARITY CHARACTERISTICS



KEY TO SYMBOLS

Red symbols indicate internal characteristics.
 Green symbols indicate external characteristics.



Sample Image Used

COLOR

| D - F | G - J | K - M | N - R | S - Z | FANCY |
|-----------|----------------|-----------------|------------------|-------------|-------|
| Colorless | Near Colorless | Slightly Tinted | Very Light Color | Light Color | |

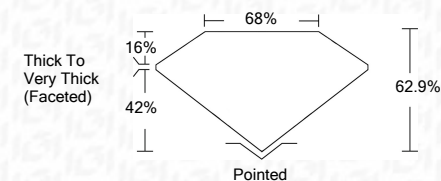
CLARITY

| IF | VS ¹⁻² | VS ¹⁻² | SI ¹⁻² | I ¹⁻³ |
|---------------------|-----------------------------|------------------------|-------------------|------------------|
| Internally Flawless | Very Very Slightly Included | Very Slightly Included | Slightly Included | Included |



March 7, 2022
 IGI Report Number 517220556
 Description NATURAL DIAMOND
 Shape and Cutting Style HEART BRILLIANT
 Measurements 5.59 x 6.65 x 4.18 mm

GRADING RESULTS
 Carat Weight 1.01 CARAT
 Color Grade I
 Clarity Grade VVS 2



ADDITIONAL GRADING INFORMATION
 Polish - Symmetry VERY GOOD
 Proportions VERY GOOD
 Fluorescence VERY SLIGHT
 Inscription(s) IGI 517220556



IGI

March 7, 2022
 IGI Report No 517220556
 NATURAL DIAMOND
 HEART BRILLIANT
 5.59 x 6.65 x 4.18 mm
 Carat Weight 1.01 CARAT
 Color Grade VVS 2
 Depth 62.9%
 Table 68%
 Girdle Thick To Very Thick (Faceted)
 Culet Pointed
 Pol - Sym VERY GOOD
 Proportions VERY GOOD
 Fluorescence VERY SLIGHT
 Inscription(s) IGI 517220556

