



DIAMOND REPORT **ELECTRONIC COPY**

523290746

April 13, 2022

IGI Report Number 523290746

Description NATURAL DIAMOND

Shape and Cutting Style ROUND BRILLIANT

Measurements 6.44 - 6.47 x 4.12 mm

GRADING RESULTS

Carat Weight 1.11 CARAT

Color Grade G

Clarity Grade SI 2

Cut Grade VERY GOOD

ADDITIONAL GRADING INFORMATION

Polish VERY GOOD

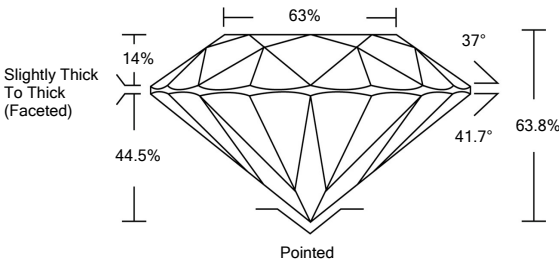
Symmetry GOOD

Fluorescence STRONG

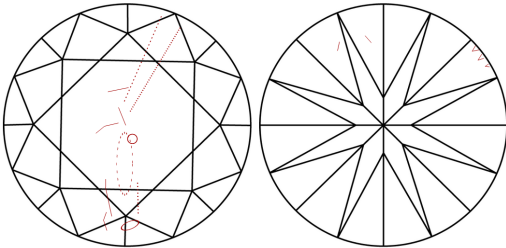
Inscription(s) IGI 523290746



PROPORTIONS

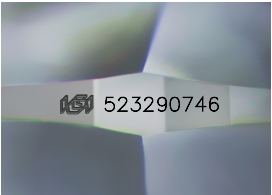


CLARITY CHARACTERISTICS



KEY TO SYMBOLS

Red symbols indicate internal characteristics.
Green symbols indicate external characteristics.



Sample Image Used

COLOR

D - F	G - J	K - M	N - R	S - Z	FANCY
Colorless	Near Colorless	Slightly Tinted	Very Light Color	Light Color	

CLARITY

IF	VS ¹⁻²	VS ¹⁻²	SI ¹⁻²	I ¹⁻³
Internally Flawless	Very Very Slightly Included	Very Slightly Included	Slightly Included	Included

DIAMOND REPORT



April 13, 2022

IGI Report Number 523290746

Description NATURAL DIAMOND

Shape and Cutting Style ROUND BRILLIANT

Measurements 6.44 - 6.47 x 4.12 mm

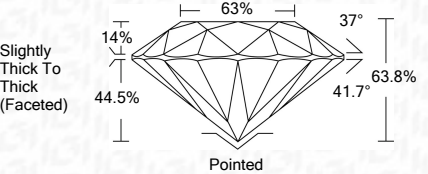
GRADING RESULTS

Carat Weight 1.11 CARAT

Color Grade G

Clarity Grade SI 2

Cut Grade VERY GOOD



ADDITIONAL GRADING INFORMATION

Polish VERY GOOD

Symmetry GOOD

Fluorescence STRONG

Inscription(s) IGI 523290746



IGI

April 13, 2022

IGI Report No 523290746

NATURAL DIAMOND

ROUND BRILLIANT

6.44 - 6.47 x 4.12 mm

Carat Weight 1.11 CARAT

Color Grade G

Clarity Grade SI 2

Cut Grade VERY GOOD

Depth 63.8%

Table 63%

Girdle Slightly Thick To Thick (Faceted)

Culet Pointed

Polish VERY GOOD

Symmetry GOOD

Fluorescence STRONG

Inscription(s) IGI 523290746