



DIAMOND REPORT **ELECTRONIC COPY**

April 19, 2022

IGI Report Number 523290761

Description NATURAL DIAMOND

Shape and Cutting Style ROUND BRILLIANT

Measurements 5.92 - 5.95 x 4.19 mm

GRADING RESULTS

Carat Weight 1.00 CARAT

Color Grade F

Clarity Grade SI 2

Cut Grade FAIR

ADDITIONAL GRADING INFORMATION

Polish EXCELLENT

Symmetry VERY GOOD

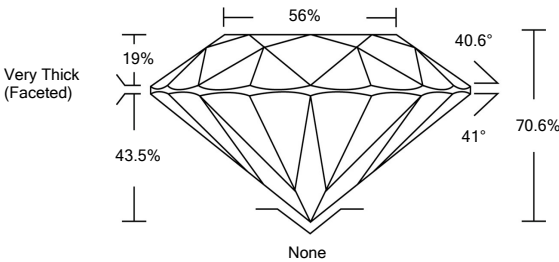
Fluorescence VERY SLIGHT

Inscription(s) IGI 523290761

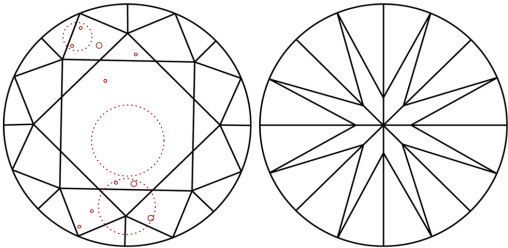


523290761

PROPORTIONS

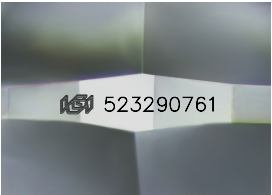


CLARITY CHARACTERISTICS



KEY TO SYMBOLS

Red symbols indicate internal characteristics.
Green symbols indicate external characteristics.



Sample Image Used

COLOR

D - F	G - J	K - M	N - R	S - Z	FANCY
Colorless	Near Colorless	Slightly Tinted	Very Light Color	Light Color	

CLARITY

IF	VS ¹⁻²	VS ¹⁻²	SI ¹⁻²	I ¹⁻³
Internally Flawless	Very Very Slightly Included	Very Slightly Included	Slightly Included	Included



DIAMOND REPORT



April 19, 2022

IGI Report Number 523290761

Description NATURAL DIAMOND

Shape and Cutting Style ROUND BRILLIANT

Measurements 5.92 - 5.95 x 4.19 mm

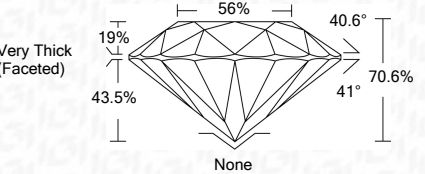
GRADING RESULTS

Carat Weight 1.00 CARAT

Color Grade F

Clarity Grade SI 2

Cut Grade FAIR



ADDITIONAL GRADING INFORMATION

Polish EXCELLENT

Symmetry VERY GOOD

Fluorescence VERY SLIGHT

Inscription(s) IGI 523290761



IGI

April 19, 2022

IGI Report No 523290761

NATURAL DIAMOND

ROUND BRILLIANT

5.92 - 5.95 x 4.19 mm

Carat Weight 1.00 CARAT

Color Grade F

Clarity Grade SI 2

Cut Grade FAIR

Depth 70.6%

Table 56%

Girdle Very Thick (Faceted)

Culet None

Polish EXCELLENT

Symmetry VERY GOOD

Fluorescence VERY SLIGHT

Inscription(s) IGI 523290761