



DIAMOND REPORT **ELECTRONIC COPY**

April 14, 2022

IGI Report Number 523290763

Description NATURAL DIAMOND

Shape and Cutting Style ROUND BRILLIANT

Measurements 5.95 - 6.01 x 4.03 mm

GRADING RESULTS

Carat Weight 1.00 CARAT

Color Grade F

Clarity Grade SI 2

Cut Grade FAIR

ADDITIONAL GRADING INFORMATION

Polish EXCELLENT

Symmetry VERY GOOD

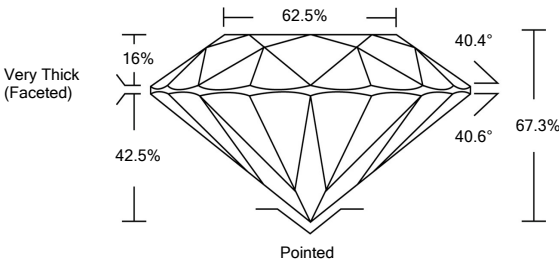
Fluorescence NONE

Inscription(s) IGI 523290763

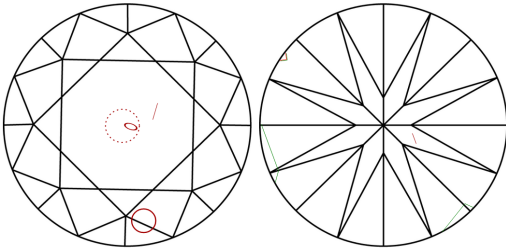


523290763

PROPORTIONS

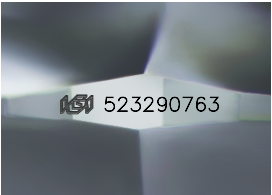


CLARITY CHARACTERISTICS



KEY TO SYMBOLS

Red symbols indicate internal characteristics.
Green symbols indicate external characteristics.



Sample Image Used

COLOR

D - F	G - J	K - M	N - R	S - Z	FANCY
Colorless	Near Colorless	Slightly Tinted	Very Light Color	Light Color	

CLARITY

IF	VS ¹⁻²	VS ¹⁻²	SI ¹⁻²	I ¹⁻³
Internally Flawless	Very Very Slightly Included	Very Slightly Included	Slightly Included	Included



DIAMOND REPORT



April 14, 2022

IGI Report Number 523290763

Description NATURAL DIAMOND

Shape and Cutting Style ROUND BRILLIANT

Measurements 5.95 - 6.01 x 4.03 mm

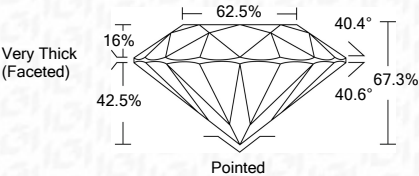
GRADING RESULTS

Carat Weight 1.00 CARAT

Color Grade F

Clarity Grade SI 2

Cut Grade FAIR



ADDITIONAL GRADING INFORMATION

Polish EXCELLENT

Symmetry VERY GOOD

Fluorescence NONE

Inscription(s) IGI 523290763



IGI

April 14, 2022

IGI Report No 523290763

NATURAL DIAMOND

ROUND BRILLIANT

5.95 - 6.01 x 4.03 mm

Carat Weight 1.00 CARAT

Color Grade F

Clarity Grade SI 2

Cut Grade FAIR

Depth 67.3%

Table 62.5%

Girdle Very Thick (Faceted)

Culet Pointed

Polish EXCELLENT

Symmetry VERY GOOD

Fluorescence NONE

Inscription(s) IGI 523290763