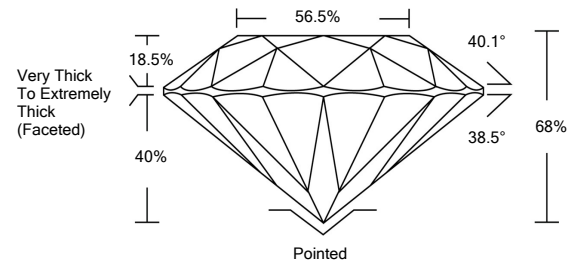


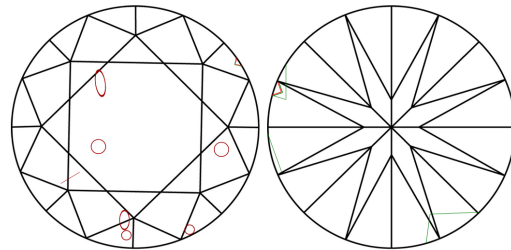


**ELECTRONIC COPY**

## PROPORTIONS

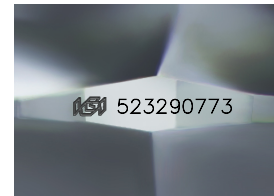


## CLARITY CHARACTERISTICS



## KEY TO SYMBOLS

Red symbols indicate internal characteristics.  
Green symbols indicate external characteristics.



Sample Image Used

**COLOR**

D - F	G - J	K - M	N - R	S - Z	FANCY
Colorless	Near Colorless	Slightly Tinted	Very Light Color	Light Color	

## CLARITY

IF	VVS <sup>1-2</sup>	VS <sup>1-2</sup>	SI <sup>1-2</sup>	I <sup>1-3</sup>
Internally Flawless	Very Very Included	Very Slightly Included	Slightly Included	Included



© IGI 2020, International Gemological Institute

FD - 10 20



THIS DOCUMENT WAS PRODUCED WITH THE FOLLOWING SECURITY MEASURES: SPECIAL DOCUMENT PAPER, INK SCREENS, WATERMARK BACKGROUND DESIGNS, HOLOGRAM AND OTHER SECURITY FEATURES NOT LISTED AND DO EXCEED DOCUMENT SECURITY INDUSTRY GUIDELINES.

## DIAMOND REPORT



April 14, 2022

IGI Report Number 523290773

Description	NATURAL DIAMOND
-------------	-----------------

Shape and Cutting Style ROUND BRILLIANT

Measurements	5.92 - 5.96 x 4.04 mm
--------------	-----------------------

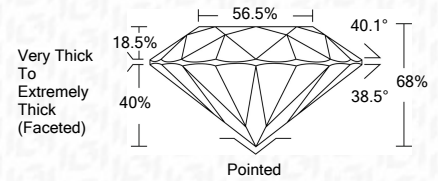
## GRADING RESULTS

Carat Weight	1.00 CARAT
--------------	------------

Color Grade	G
-------------	---

Clarity Grade	SI 2
---------------	------

Cut Grade	FAIR
-----------	------



### ADDITIONAL GRADING INFORMATION

Polish VERY GOOD

Symmetry GOODFluorescence NONE

Inscription(s) IGI 523290773



IGI



**www.igi.org**

April 14, 2022	IGI Report No 5710287301
NATURAL DIAMOND	
ROUND BRILLIANT	
5.92 - 5.96 x 4.0	0.00
Carat Weight	
Color Grade	
Clarity Grade	
Cut Grade	
Depth	
Table	
Girdle	
Culet	
Polish	
Symmetry	
Fluorescence	
Inscription(s)	