



530291350

DIAMOND REPORT **ELECTRONIC COPY**

June 3, 2022
 IGI Report Number 530291350
 Description NATURAL DIAMOND
 Shape and Cutting Style EMERALD CUT
 Measurements 6.87 x 4.66 x 3.10 mm

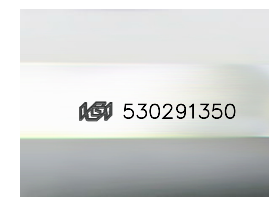
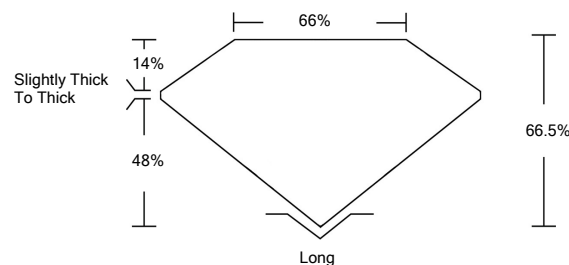
GRADING RESULTS

Carat Weight 1.01 CARAT
 Color Grade J
 Clarity Grade VS 2

ADDITIONAL GRADING INFORMATION

Polish - Symmetry EXCELLENT
 Proportions VERY GOOD
 Fluorescence NONE
 Inscription(s) IGI 530291350

PROPORTIONS



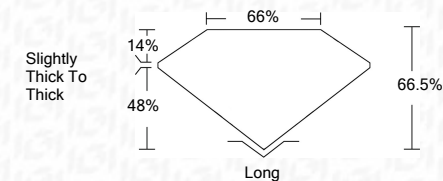
Sample Image Used



June 3, 2022
 IGI Report Number 530291350
 Description NATURAL DIAMOND
 Shape and Cutting Style EMERALD CUT
 Measurements 6.87 x 4.66 x 3.10 mm

GRADING RESULTS

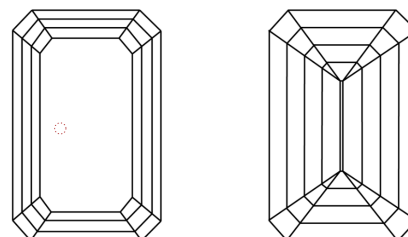
Carat Weight 1.01 CARAT
 Color Grade J
 Clarity Grade VS 2



ADDITIONAL GRADING INFORMATION

Polish - Symmetry EXCELLENT
 Proportions VERY GOOD
 Fluorescence NONE
 Inscription(s) IGI 530291350

CLARITY CHARACTERISTICS



KEY TO SYMBOLS

Red symbols indicate internal characteristics.
 Green symbols indicate external characteristics.

COLOR

D - F	G - J	K - M	N - R	S - Z	FANCY
Colorless	Near Colorless	Slightly Tinted	Very Light Color	Light Color	

CLARITY

IF	VS ¹⁻²	VS ¹⁻²	SI ¹⁻²	I ¹⁻³
Internally Flawless	Very Very Slightly Included	Very Slightly Included	Slightly Included	Included



IGI

June 3, 2022
 IGI Report No 530291350
 NATURAL DIAMOND
 EMERALD CUT
 6.87 x 4.66 x 3.10 mm
 Carat Weight 1.01 CARAT
 Color Grade J
 Clarity Grade VS 2
 Depth 66.5%
 Table 66%
 Girdle Slightly Thick To Thick
 Culet Long
 Pol - Sym EXCELLENT
 Proportions VERY GOOD
 Fluorescence NONE
 Inscription(s) IGI 530291350