



563235680

**DIAMOND REPORT**

**ELECTRONIC COPY**



January 25, 2023  
IGI Report Number 563235680  
Description NATURAL DIAMOND  
Shape and Cutting Style PRINCESS CUT  
Measurements 5.57 x 5.56 x 4.08 mm

**GRADING RESULTS**

Carat Weight 1.20 CARAT  
Color Grade I  
Clarity Grade VVS 2  
Cut Grade VERY GOOD

January 25, 2023  
IGI Report Number 563235680  
Description NATURAL DIAMOND  
Shape and Cutting Style PRINCESS CUT  
Measurements 5.57 x 5.56 x 4.08 mm

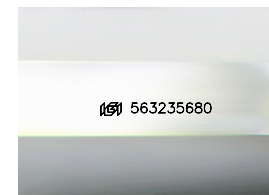
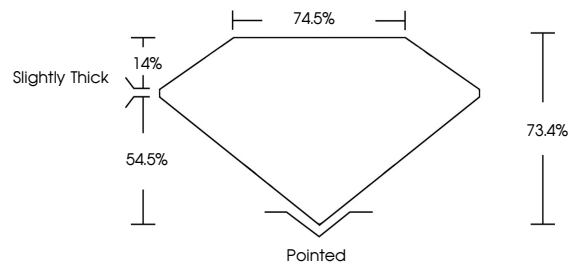
**GRADING RESULTS**

Carat Weight 1.20 CARAT  
Color Grade I  
Clarity Grade VVS 2  
Cut Grade VERY GOOD

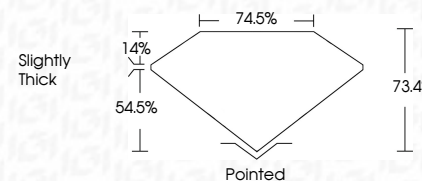
**ADDITIONAL GRADING INFORMATION**

Polish EXCELLENT  
Symmetry EXCELLENT  
Fluorescence NONE  
Inscription(s) IGI 563235680

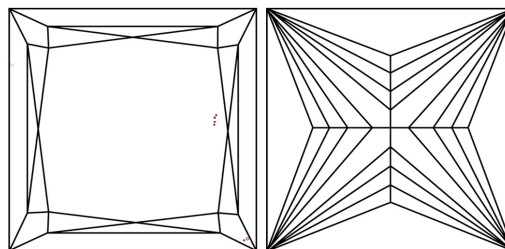
**PROPORTIONS**



Sample Image Used



**CLARITY CHARACTERISTICS**



**COLOR**

D - F	G - J	K - M	N - R	S - Z	FANCY
Colorless	Near Colorless	Slightly Tinted	Very Light Color	Light Color	

**CLARITY**

IF	VVS <sup>1-2</sup>	VS <sup>1-2</sup>	SI <sup>1-2</sup>	I <sup>1-3</sup>
Internally Flawless	Very Very Slightly Included	Very Slightly Included	Slightly Included	Included

**KEY TO SYMBOLS**

Red symbols indicate internal characteristics.  
Green symbols indicate external characteristics.



**ADDITIONAL GRADING INFORMATION**

Polish EXCELLENT  
Symmetry EXCELLENT  
Fluorescence NONE  
Inscription(s) IGI 563235680



**IGI**

January 25, 2023  
IGI Report No 563235680  
NATURAL DIAMOND  
PRINCESS CUT  
5.57 x 5.56 x 4.08 mm  
Carat Weight 1.20 CARAT  
Color Grade I  
Clarity Grade VVS2  
Cut Grade VERY GOOD  
Depth 73.4%  
Table 74.5%  
Grade Slightly Thick  
Culet Pointed  
Polish EXCELLENT  
Symmetry EXCELLENT  
Fluorescence NONE  
Inscriptions IGI 563235680

