

February 26, 2024

IGI Report Number616498567

DescriptionNATURAL DIAMOND

Shape and Cutting StyleROUND BRILLIANT

Measurements6.34 - 6.39 x 4.00 mm

GRADING RESULTS

Carat Weight1.01 CARAT

Color GradeK

Clarity GradeVS 2

Cut GradeEXCELLENT

ADDITIONAL GRADING INFORMATION

PolishEXCELLENT

SymmetryEXCELLENT

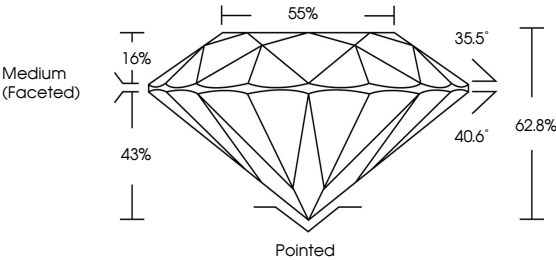
FluorescenceNONE

Inscription(s) 616498567

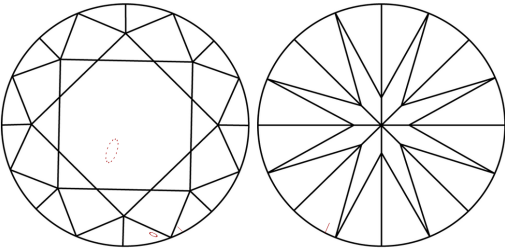


616498567

PROPORTIONS

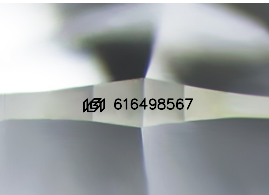


CLARITY CHARACTERISTICS



KEY TO SYMBOLS

Red symbols indicate internal characteristics.
Green symbols indicate external characteristics.



Sample Image Used

COLOR

D - F	G - J	K - M	N - R	S - Z	FANCY
Colorless	Near Colorless	Slightly Tinted	Very Light Color	Light Color	

CLARITY

IF	VS ¹⁻²	VS ¹⁻²	SI ¹⁻²	I ¹⁻³
Internally Flawless	Very Very Slightly Included	Very Slightly Included	Slightly Included	Included



DIAMOND REPORT



February 26, 2024

IGI Report Number616498567

DescriptionNATURAL DIAMOND

Shape and Cutting StyleROUND BRILLIANT

Measurements6.34 - 6.39 x 4.00 mm

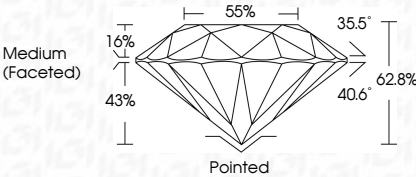
GRADING RESULTS

Carat Weight1.01 CARAT

Color GradeK

Clarity GradeVS 2

Cut GradeEXCELLENT



ADDITIONAL GRADING INFORMATION

PolishEXCELLENT

SymmetryEXCELLENT

FluorescenceNONE

Inscription(s) 616498567



IGI

February 26, 2024

IGI Report No 616498567

NATURAL DIAMOND

ROUND BRILLIANT

6.34 - 6.39 x 4.00 mm

Carat Weight1.01 CARAT

Color GradeK

Clarity GradeVS2

Cut GradeEXCELLENT

Depth62.8%

Table55%

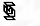
GirdleMedium (Faceted)

CuletPointed

PolishEXCELLENT

SymmetryEXCELLENT

FluorescenceNONE

Inscription(s) 616498567