



620495817

DIAMOND REPORT **ELECTRONIC COPY**



March 15, 2024
IGI Report Number 620495817
Description NATURAL DIAMOND
Shape and Cutting Style ROUND BRILLIANT
Measurements 10.76 - 10.84 x 6.58 mm

GRADING RESULTS

Carat Weight 4.70 CARATS
Color Grade I
Clarity Grade SI 1
Cut Grade EXCELLENT

March 15, 2024
IGI Report Number 620495817
Description NATURAL DIAMOND
Shape and Cutting Style ROUND BRILLIANT
Measurements 10.76 - 10.84 x 6.58 mm

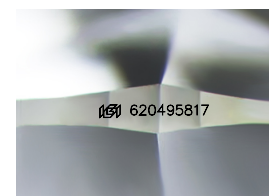
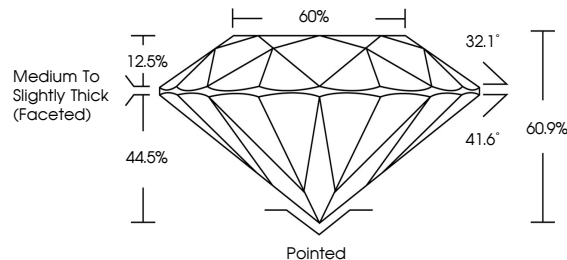
GRADING RESULTS

Carat Weight 4.70 CARATS
Color Grade I
Clarity Grade SI 1
Cut Grade EXCELLENT

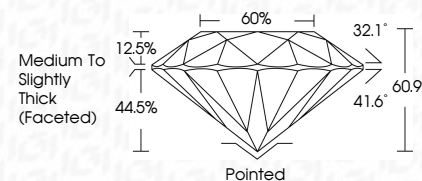
ADDITIONAL GRADING INFORMATION

Polish EXCELLENT
Symmetry EXCELLENT
Fluorescence NONE
Inscription(s) IGI 620495817

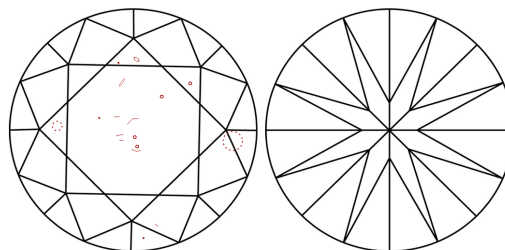
PROPORTIONS



Sample Image Used



CLARITY CHARACTERISTICS



KEY TO SYMBOLS

Red symbols indicate internal characteristics.
Green symbols indicate external characteristics.

COLOR

D - F	G - J	K - M	N - R	S - Z	FANCY
Colorless	Near Colorless	Slightly Tinted	Very Light Color	Light Color	

CLARITY

IF	VS ¹⁻²	VS ¹⁻²	SI ¹⁻²	I ¹⁻³
Internally Flawless	Very Very Slightly Included	Very Slightly Included	Slightly Included	Included

ADDITIONAL GRADING INFORMATION

Polish EXCELLENT
Symmetry EXCELLENT
Fluorescence NONE
Inscription(s) IGI 620495817



IGI

March 15, 2024
IGI Report No 620495817
NATURAL DIAMOND
ROUND BRILLIANT
10.76 - 10.84 x 6.58 mm
Carat Weight 4.70 CARATS
Color Grade I
Clarity Grade SI 1
Cut Grade EXCELLENT
Depth 60%
Table Grade Medium To Slightly Thick (Faceted)
Culet Pointed
Polish EXCELLENT
Symmetry EXCELLENT
Fluorescence NONE
Inscription(s) IGI 620495817