



ELECTRONIC COPY

LG633476804
Report verification at igi.org



May 10, 2024

IGI Report Number **LG633476804**

Description **LABORATORY GROWN DIAMOND**

Shape and Cutting Style **CUT CORNERED
RECTANGULAR MODIFIED
BRILLIANT**

Measurements **7.49 X 6.93 X 4.81 MM**

GRADING RESULTS

Carat Weight **2.36 CARATS**

Color Grade **FANCY VIVID PINK**

Clarity Grade **VS 1**

LABORATORY GROWN DIAMOND REPORT

May 10, 2024

IGI Report Number **LG633476804**

Description **LABORATORY GROWN DIAMOND**

Shape and Cutting Style **CUT CORNERED RECTANGULAR
MODIFIED BRILLIANT**

Measurements **7.49 X 6.93 X 4.81 MM**

GRADING RESULTS

Carat Weight **2.36 CARATS**

Color Grade **FANCY VIVID PINK**

Clarity Grade **VS 1**

ADDITIONAL GRADING INFORMATION

Polish **EXCELLENT**

Symmetry **EXCELLENT**

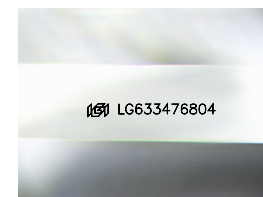
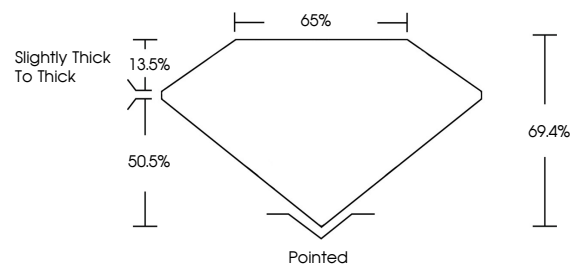
Fluorescence **SLIGHT**

Inscription(s) **IGI LG633476804**

Comments: This Laboratory Grown Diamond was created by Chemical Vapor Deposition (CVD) growth process.

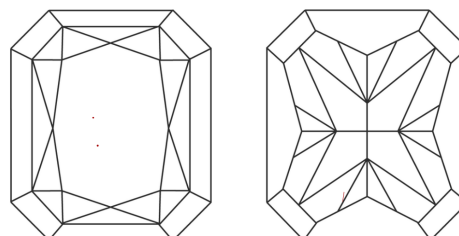
Indications of post-growth treatment.

PROPORTIONS



Sample Image Used

CLARITY CHARACTERISTICS



KEY TO SYMBOLS

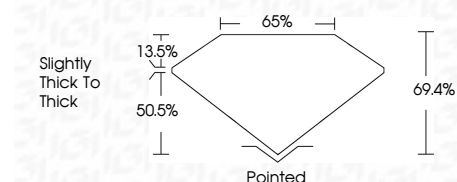
Red symbols indicate internal characteristics.
Green symbols indicate external characteristics.

COLOR

D E F G H I J Faint Very Light Light

CLARITY

IF	VS ¹⁻²	VS ¹⁻²	SI ¹⁻²	I ¹⁻³
Internally Flawless	Very Very Slightly Included	Very Slightly Included	Slightly Included	Included



ADDITIONAL GRADING INFORMATION

Polish **EXCELLENT**

Symmetry **EXCELLENT**

Fluorescence **SLIGHT**

Inscription(s) **IGI LG633476804**

Comments: This Laboratory Grown Diamond was created by Chemical Vapor Deposition (CVD) growth process. Indications of post-growth treatment.



IGI



May 10, 2024
IGI Report No LG633476804
CUT CORNERED RECT. MODIFIED BRILLIANT
7.49 X 6.93 X 4.81 MM
2.36 CARATS
FANCY VIVID PINK
VS 1
69.4%
50.5%
Slightly thick to thick
Pointed
EXCELLENT
EXCELLENT
SLIGHT
IGI LG633476804

Comments: This Laboratory Grown Diamond was created by Chemical Vapor Deposition (CVD) growth process. Indications of post-growth treatment.