



ELECTRONIC COPY

LG634481324
Report verification at igi.org



June 27, 2024

IGI Report Number **LG634481324**

Description **LABORATORY GROWN DIAMOND**

Shape and Cutting Style **ROUND BRILLIANT**

Measurements **6.37 - 6.41 X 3.98 MM**

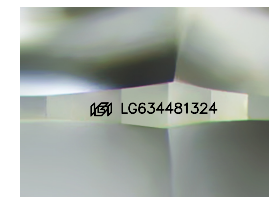
GRADING RESULTS

Carat Weight **1.00 CARAT**

Color Grade **FANCY LIGHT PINK**

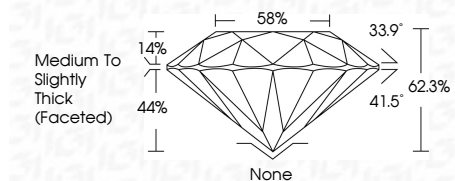
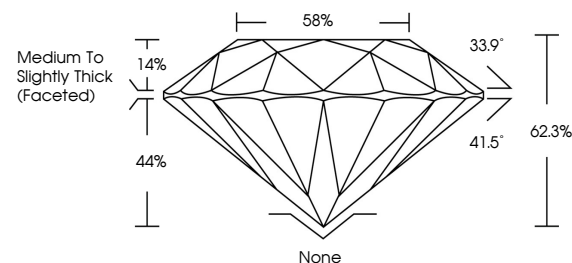
Clarity Grade **VS 2**

Cut Grade **IDEAL**

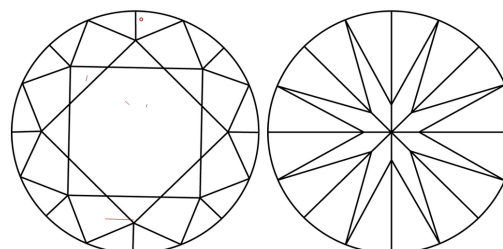


Sample Image Used

PROPORTIONS



CLARITY CHARACTERISTICS



KEY TO SYMBOLS

Red symbols indicate internal characteristics.
Green symbols indicate external characteristics.

COLOR

D E F G H I J Faint Very Light Light

CLARITY

IF	VS ¹⁻²	VS ¹⁻²	SI ¹⁻²	I ¹⁻³
Internally Flawless	Very Very Slightly Included	Very Slightly Included	Slightly Included	Included

ADDITIONAL GRADING INFORMATION

Polish **EXCELLENT**

Symmetry **EXCELLENT**

Fluorescence **STRONG**

Inscription(s) **IGI LG634481324**

Comments: This Laboratory Grown Diamond was created by Chemical Vapor Deposition (CVD) growth process. Indications of post-growth treatment.



June 27, 2024
IGI Report No. LG634481324
ROUND BRILLIANT

6.37 - 6.41 X 3.98 MM
1.00 CARAT
FANCY LIGHT PINK
VS 2
IDEAL
58%
62.3%
Medium To Slightly Thick (Faceted)

None
EXCELLENT
EXCELLENT
STRONG
IGI LG634481324

Culet
Polish
Symmetry
Fluorescence
Inscriptions(s)

Comments: This Laboratory Grown Diamond was created by Chemical Vapor Deposition (CVD) growth process. Indications of post-growth treatment.