



ELECTRONIC COPY

LG634481332
Report verification at igi.org



June 27, 2024
IGI Report Number: LG634481332
Description: LABORATORY GROWN DIAMOND
Shape and Cutting Style: ROUND BRILLIANT
Measurements: 6.93 - 7.00 X 4.31 MM
GRADING RESULTS
Carat Weight: 1.28 CARAT
Color Grade: FANCY PINK
Clarity Grade: VS 2
Cut Grade: IDEAL

June 27, 2024
IGI Report Number: LG634481332
Description: LABORATORY GROWN DIAMOND
Shape and Cutting Style: ROUND BRILLIANT
Measurements: 6.93 - 7.00 X 4.31 MM

GRADING RESULTS

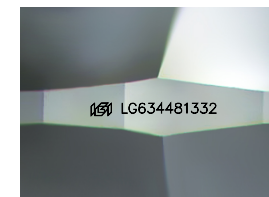
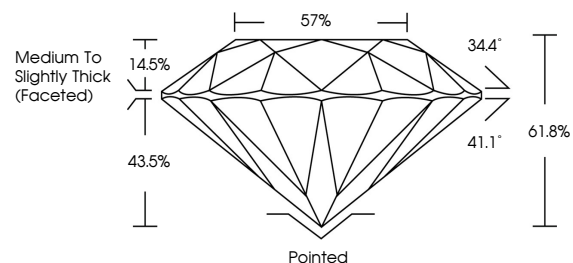
Carat Weight: 1.28 CARAT
Color Grade: FANCY PINK
Clarity Grade: VS 2
Cut Grade: IDEAL

ADDITIONAL GRADING INFORMATION

Polish: EXCELLENT
Symmetry: EXCELLENT
Fluorescence: STRONG
Inscription(s): IGI LG634481332

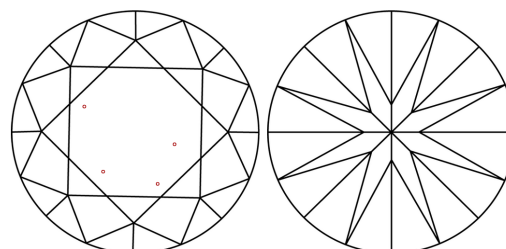
Comments: This Laboratory Grown Diamond was created by Chemical Vapor Deposition (CVD) growth process. Indications of post-growth treatment.

PROPORTIONS



Sample Image Used

CLARITY CHARACTERISTICS



KEY TO SYMBOLS

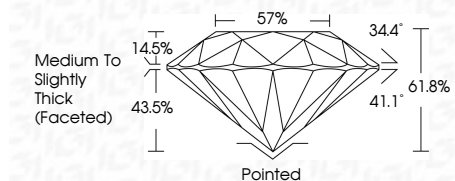
Red symbols indicate internal characteristics.
Green symbols indicate external characteristics.

COLOR

D E F G H I J Faint Very Light Light

CLARITY

IF VS 1-2 VS 1-2 SI 1-2 I 1-3
Internally Flawless Very Very Slightly Included Very Slightly Included Slightly Included Included



ADDITIONAL GRADING INFORMATION

Polish: EXCELLENT
Symmetry: EXCELLENT
Fluorescence: STRONG
Inscription(s): IGI LG634481332
Comments: This Laboratory Grown Diamond was created by Chemical Vapor Deposition (CVD) growth process. Indications of post-growth treatment.



IGI



Summary table of report details: June 27, 2024, IGI Report No. LG634481332, ROUND BRILLIANT, 6.93 - 7.00 X 4.31 MM, 1.28 CARAT, FANCY PINK, VS 2, IDEAL, 61.8%, 57%, Medium To Slightly Thick (Faceted), Pointed, EXCELLENT, EXCELLENT, STRONG, IGI LG634481332. Comments: This Laboratory Grown Diamond was created by Chemical Vapor Deposition (CVD) growth process. Indications of post-growth treatment.