



ELECTRONIC COPY

LG634481343
Report verification at igi.org



June 27, 2024
IGI Report Number **LG634481343**
Description **LABORATORY GROWN DIAMOND**
Shape and Cutting Style **ROUND BRILLIANT**
Measurements **8.01 - 8.04 X 4.73 MM**
GRADING RESULTS
Carat Weight **1.85 CARAT**
Color Grade **FANCY PINK**
Clarity Grade **VS 2**
Cut Grade **IDEAL**

June 27, 2024
IGI Report Number **LG634481343**
Description **LABORATORY GROWN DIAMOND**
Shape and Cutting Style **ROUND BRILLIANT**
Measurements **8.01 - 8.04 X 4.73 MM**

GRADING RESULTS

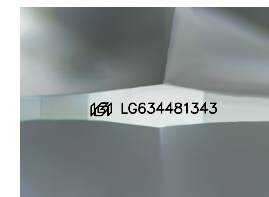
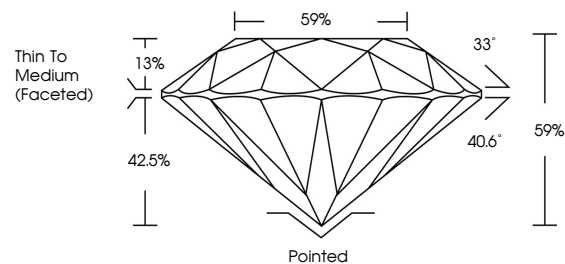
Carat Weight **1.85 CARAT**
Color Grade **FANCY PINK**
Clarity Grade **VS 2**
Cut Grade **IDEAL**

ADDITIONAL GRADING INFORMATION

Polish **EXCELLENT**
Symmetry **EXCELLENT**
Fluorescence **STRONG**
Inscription(s) **LG634481343**

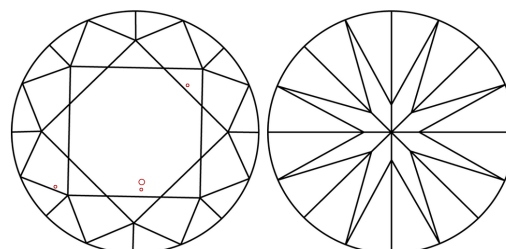
Comments: This Laboratory Grown Diamond was created by Chemical Vapor Deposition (CVD) growth process.
Indications of post-growth treatment.

PROPORTIONS



Sample Image Used

CLARITY CHARACTERISTICS



KEY TO SYMBOLS

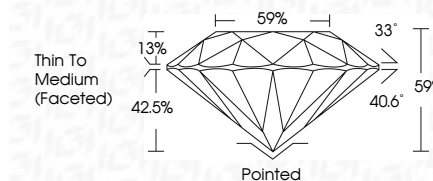
Red symbols indicate internal characteristics.
Green symbols indicate external characteristics.

COLOR

D E F G H I J Faint Very Light Light

CLARITY

IF	VS ¹⁻²	VS ¹⁻²	SI ¹⁻²	I ¹⁻³
Internally Flawless	Very Very Slightly Included	Very Slightly Included	Slightly Included	Included



ADDITIONAL GRADING INFORMATION

Polish **EXCELLENT**
Symmetry **EXCELLENT**
Fluorescence **STRONG**
Inscription(s) **LG634481343**
Comments: This Laboratory Grown Diamond was created by Chemical Vapor Deposition (CVD) growth process.
Indications of post-growth treatment.



June 27, 2024
IGI Report No LG634481343
ROUND BRILLIANT
1.85 CARAT
FANCY PINK
VS 2
IDEAL
59%
59%
Thin To Medium (Faceted)
Pointed
EXCELLENT
EXCELLENT
STRONG
IGI LG634481343
Comments: This Laboratory Grown Diamond was created by Chemical Vapor Deposition (CVD) growth process.
Indications of post-growth treatment.