



ELECTRONIC COPY

LG634481345
Report verification at igi.org



June 28, 2024
IGI Report Number LG634481345
Description LABORATORY GROWN DIAMOND
Shape and Cutting Style ROUND BRILLIANT
Measurements 8.04 - 8.08 X 5.00 MM
GRADING RESULTS
Carat Weight 2.00 CARATS
Color Grade FANCY LIGHT PINK
Clarity Grade VVS 2
Cut Grade IDEAL

June 28, 2024
IGI Report Number LG634481345
Description LABORATORY GROWN DIAMOND
Shape and Cutting Style ROUND BRILLIANT
Measurements 8.04 - 8.08 X 5.00 MM

GRADING RESULTS

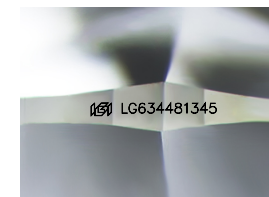
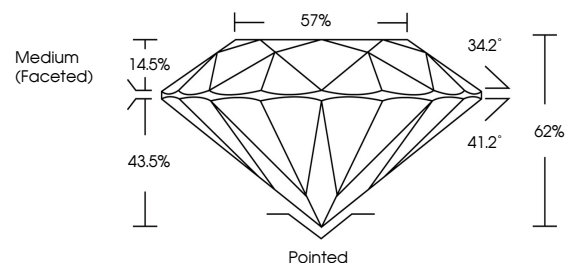
Carat Weight 2.00 CARATS
Color Grade FANCY LIGHT PINK
Clarity Grade VVS 2
Cut Grade IDEAL

ADDITIONAL GRADING INFORMATION

Polish EXCELLENT
Symmetry EXCELLENT
Fluorescence STRONG
Inscription(s) IGI LG634481345

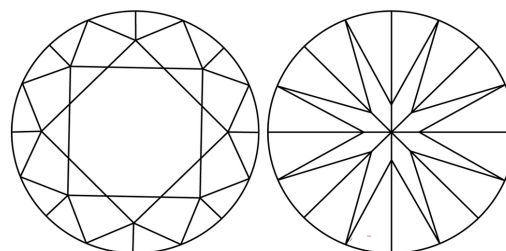
Comments: This Laboratory Grown Diamond was created by Chemical Vapor Deposition (CVD) growth process.
Indications of post-growth treatment.

PROPORTIONS



Sample Image Used

CLARITY CHARACTERISTICS



KEY TO SYMBOLS

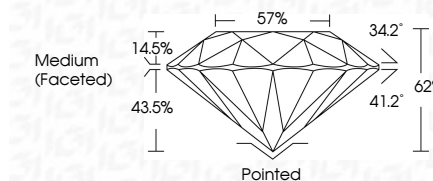
Red symbols indicate internal characteristics.
Green symbols indicate external characteristics.

COLOR

D E F G H I J Faint Very Light Light

CLARITY

IF WS 1-2 VS 1-2 SI 1-2 I 1-3
Internally Flawless Very Very Slightly Included Very Slightly Included Slightly Included Included



ADDITIONAL GRADING INFORMATION

Polish EXCELLENT
Symmetry EXCELLENT
Fluorescence STRONG
Inscription(s) IGI LG634481345
Comments: This Laboratory Grown Diamond was created by Chemical Vapor Deposition (CVD) growth process.
Indications of post-growth treatment.



IGI



June 28, 2024
IGI Report No LG634481345
ROUND BRILLIANT
8.04 - 8.08 X 5.00 MM
2.00 CARATS
FANCY LIGHT PINK
VVS 2
IDEAL
62%
57%
Medium (Faceted)
Pointed
EXCELLENT
EXCELLENT
STRONG
IGI LG634481345
Comments: This Laboratory Grown Diamond was created by Chemical Vapor Deposition (CVD) growth process.
Indications of post-growth treatment.