



ELECTRONIC COPY

LG634481353
Report verification at igi.org



June 28, 2024
IGI Report Number **LG634481353**
Description **LABORATORY GROWN DIAMOND**
Shape and Cutting Style **ROUND BRILLIANT**
Measurements **8.09 - 8.12 X 5.03 MM**
GRADING RESULTS
Carat Weight **2.04 CARATS**
Color Grade **FANCY LIGHT PINK**
Clarity Grade **VVS 2**
Cut Grade **IDEAL**

June 28, 2024
IGI Report Number **LG634481353**
Description **LABORATORY GROWN DIAMOND**
Shape and Cutting Style **ROUND BRILLIANT**
Measurements **8.09 - 8.12 X 5.03 MM**

GRADING RESULTS

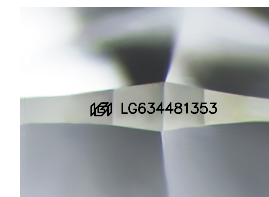
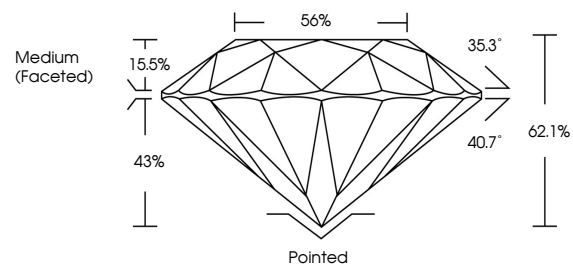
Carat Weight **2.04 CARATS**
Color Grade **FANCY LIGHT PINK**
Clarity Grade **VVS 2**
Cut Grade **IDEAL**

ADDITIONAL GRADING INFORMATION

Polish **EXCELLENT**
Symmetry **EXCELLENT**
Fluorescence **STRONG**
Inscription(s) **LG634481353**

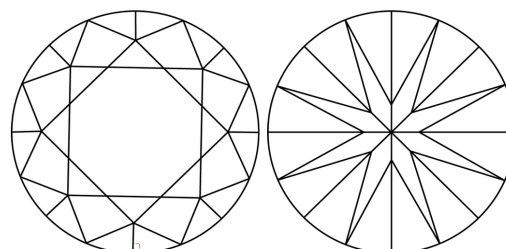
Comments: This Laboratory Grown Diamond was created by Chemical Vapor Deposition (CVD) growth process.
Indications of post-growth treatment.

PROPORTIONS



Sample Image Used

CLARITY CHARACTERISTICS



KEY TO SYMBOLS

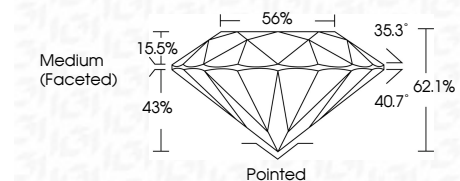
Red symbols indicate internal characteristics.
Green symbols indicate external characteristics.

COLOR

D E F G H I J Faint Very Light Light

CLARITY

IF	VS ¹⁻²	VS ¹⁻²	SI ¹⁻²	I ¹⁻³
Internally Flawless	Very Very Slightly Included	Very Slightly Included	Slightly Included	Included



ADDITIONAL GRADING INFORMATION

Polish **EXCELLENT**
Symmetry **EXCELLENT**
Fluorescence **STRONG**
Inscription(s) **LG634481353**
Comments: This Laboratory Grown Diamond was created by Chemical Vapor Deposition (CVD) growth process.
Indications of post-growth treatment.



June 28, 2024
IGI Report No LG634481353
ROUND BRILLIANT

2.04 CARATS
Carat Weight
FANCY LIGHT PINK
Color Grade
VVS 2
Clarity Grade
IDEAL
Depth
62.1%
Table
56%
Girdle
Medium (Faceted)

Culet
Pointed
Polish
EXCELLENT
Symmetry
EXCELLENT
Fluorescence
STRONG
Inscriptions(s)
 LG634481353

Comments: This Laboratory Grown Diamond was created by Chemical Vapor Deposition (CVD) growth process.
Indications of post-growth treatment.