



ELECTRONIC COPY

LG634481366
Report verification at igi.org



June 28, 2024
IGI Report Number **LG634481366**
Description **LABORATORY GROWN DIAMOND**
Shape and Cutting Style **ROUND BRILLIANT**
Measurements **8.32 - 8.35 X 5.22 MM**
GRADING RESULTS
Carat Weight **2.21 CARATS**
Color Grade **FANCY PINK**
Clarity Grade **SI 1**
Cut Grade **EXCELLENT**

June 28, 2024
IGI Report Number **LG634481366**
Description **LABORATORY GROWN DIAMOND**
Shape and Cutting Style **ROUND BRILLIANT**
Measurements **8.32 - 8.35 X 5.22 MM**

GRADING RESULTS

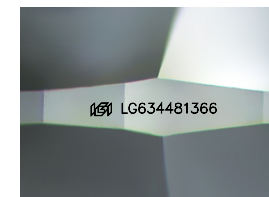
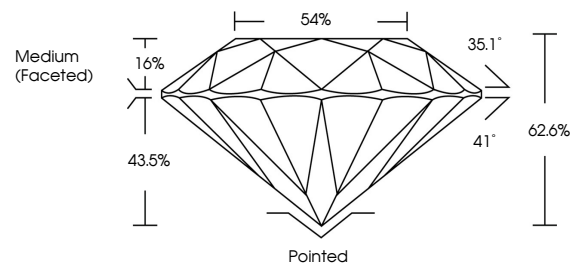
Carat Weight **2.21 CARATS**
Color Grade **FANCY PINK**
Clarity Grade **SI 1**
Cut Grade **EXCELLENT**

ADDITIONAL GRADING INFORMATION

Polish **EXCELLENT**
Symmetry **EXCELLENT**
Fluorescence **STRONG**
Inscription(s) **LG634481366**

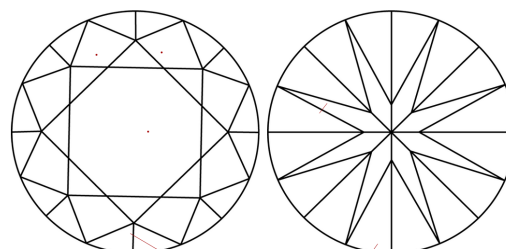
Comments: This Laboratory Grown Diamond was created by Chemical Vapor Deposition (CVD) growth process.
Indications of post-growth treatment.

PROPORTIONS



Sample Image Used

CLARITY CHARACTERISTICS



KEY TO SYMBOLS

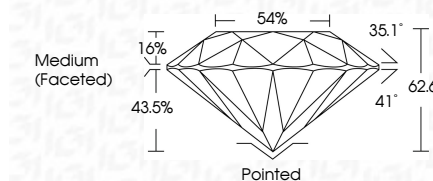
Red symbols indicate internal characteristics.
Green symbols indicate external characteristics.

COLOR

D E F G H I J Faint Very Light Light

CLARITY

IF	VS ¹⁻²	VS ¹⁻²	SI ¹⁻²	I ¹⁻³
Internally Flawless	Very Very Slightly Included	Very Slightly Included	Slightly Included	Included



ADDITIONAL GRADING INFORMATION

Polish **EXCELLENT**
Symmetry **EXCELLENT**
Fluorescence **STRONG**
Inscription(s) **LG634481366**
Comments: This Laboratory Grown Diamond was created by Chemical Vapor Deposition (CVD) growth process.
Indications of post-growth treatment.



June 28, 2024
IGI Report No LG634481366
ROUND BRILLIANT
8.32 - 8.35 X 5.22 MM
2.21 CARATS
FANCY PINK
SI 1
EXCELLENT
62.6%
54%
Medium (Faceted)Pointed
EXCELLENT
EXCELLENT
STRONG
EXCELLENT
IGI LG634481366
Comments: This Laboratory Grown Diamond was created by Chemical Vapor Deposition (CVD) growth process.
Indications of post-growth treatment.