



ELECTRONIC COPY

LG634481373
Report verification at igi.org



June 28, 2024
IGI Report Number LG634481373
Description LABORATORY GROWN DIAMOND
Shape and Cutting Style ROUND BRILLIANT
Measurements 9.06 - 9.10 X 5.45 MM
GRADING RESULTS
Carat Weight 2.72 CARATS
Color Grade FANCY LIGHT PINK
Clarity Grade VS 1
Cut Grade IDEAL

June 28, 2024
IGI Report Number LG634481373
Description LABORATORY GROWN DIAMOND
Shape and Cutting Style ROUND BRILLIANT
Measurements 9.06 - 9.10 X 5.45 MM

GRADING RESULTS

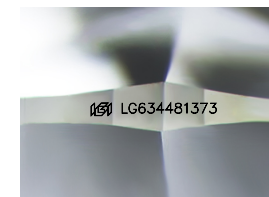
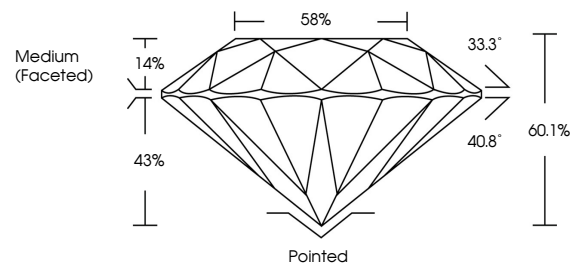
Carat Weight 2.72 CARATS
Color Grade FANCY LIGHT PINK
Clarity Grade VS 1
Cut Grade IDEAL

ADDITIONAL GRADING INFORMATION

Polish EXCELLENT
Symmetry EXCELLENT
Fluorescence STRONG
Inscription(s) IGI LG634481373

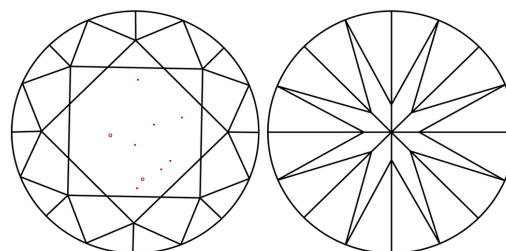
Comments: This Laboratory Grown Diamond was created by Chemical Vapor Deposition (CVD) growth process.
Indications of post-growth treatment.

PROPORTIONS



Sample Image Used

CLARITY CHARACTERISTICS



KEY TO SYMBOLS

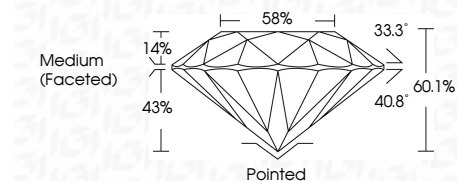
Red symbols indicate internal characteristics.
Green symbols indicate external characteristics.

COLOR

D E F G H I J Faint Very Light Light

CLARITY

Table with columns for clarity grades: IF, VS 1-2, VS 1-2, SI 1-2, I 1-3 and their corresponding descriptions: Internally Flawless, Very Very Slightly Included, Very Slightly Included, Slightly Included, Included.



ADDITIONAL GRADING INFORMATION

Polish EXCELLENT
Symmetry EXCELLENT
Fluorescence STRONG
Inscription(s) IGI LG634481373
Comments: This Laboratory Grown Diamond was created by Chemical Vapor Deposition (CVD) growth process.
Indications of post-growth treatment.



Summary of report details including date, report number, description, measurements, grading results, and additional information.