



ELECTRONIC COPY

LG634481381
Report verification at igi.org



June 28, 2024
IGI Report Number: LG634481381
Description: LABORATORY GROWN DIAMOND
Shape and Cutting Style: ROUND BRILLIANT
Measurements: 9.28 - 9.32 X 5.67 MM
GRADING RESULTS
Carat Weight: 3.00 CARATS
Color Grade: FANCY INTENSE PINK
Clarity Grade: VS 1
Cut Grade: IDEAL

June 28, 2024
IGI Report Number: LG634481381
Description: LABORATORY GROWN DIAMOND
Shape and Cutting Style: ROUND BRILLIANT
Measurements: 9.28 - 9.32 X 5.67 MM

GRADING RESULTS

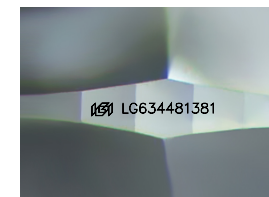
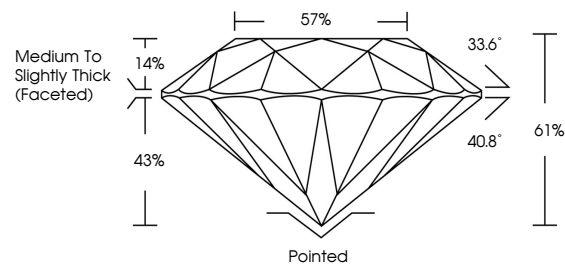
Carat Weight: 3.00 CARATS
Color Grade: FANCY INTENSE PINK
Clarity Grade: VS 1
Cut Grade: IDEAL

ADDITIONAL GRADING INFORMATION

Polish: EXCELLENT
Symmetry: EXCELLENT
Fluorescence: STRONG
Inscription(s): IGI LG634481381

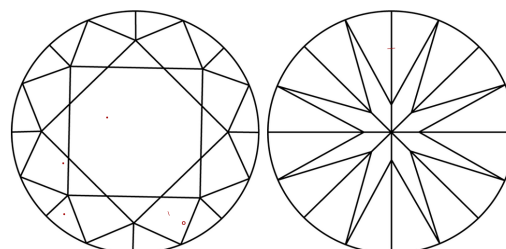
Comments: This Laboratory Grown Diamond was created by Chemical Vapor Deposition (CVD) growth process.
Indications of post-growth treatment.

PROPORTIONS



Sample Image Used

CLARITY CHARACTERISTICS



KEY TO SYMBOLS

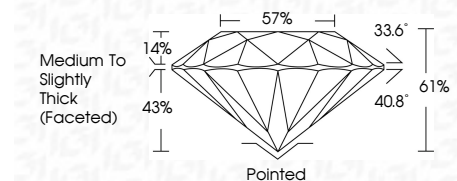
Red symbols indicate internal characteristics.
Green symbols indicate external characteristics.

COLOR

D E F G H I J Faint Very Light Light

CLARITY

IF VS 1-2 VS 1-2 SI 1-2 I 1-3
Internally Flawless Very Very Slightly Included Very Slightly Included Slightly Included Included



ADDITIONAL GRADING INFORMATION

Polish: EXCELLENT
Symmetry: EXCELLENT
Fluorescence: STRONG
Inscription(s): IGI LG634481381
Comments: This Laboratory Grown Diamond was created by Chemical Vapor Deposition (CVD) growth process.
Indications of post-growth treatment.



Summary table of report details including date, report number, measurements, grading results, and additional information.