



**ELECTRONIC COPY**

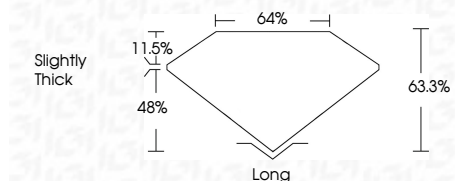
LG634481475  
Report verification at igi.org



July 4, 2024  
IGI Report Number **LG634481475**  
Description **LABORATORY GROWN DIAMOND**  
Shape and Cutting Style **EMERALD CUT**  
Measurements **7.83 X 5.59 X 3.54 MM**

**GRADING RESULTS**

Carat Weight **1.52 CARAT**  
Color Grade **S-T**  
Clarity Grade **VS 2**



**ADDITIONAL GRADING INFORMATION**

Polish **EXCELLENT**  
Symmetry **VERY GOOD**  
Fluorescence **SLIGHT**  
Inscription(s) **IGI LG634481475**  
Comments: This Laboratory Grown Diamond was created by Chemical Vapor Deposition (CVD) growth process.  
Type IIa  
Light Brown



July 4, 2024  
IGI Report No. **LG634481475**  
**EMERALD CUT**  
7.83 X 5.59 X 3.54 MM  
1.52 CARAT  
S-T  
VS 2  
68.8%  
64%  
11.5%  
63.3%  
Slightly Thick  
Long  
EXCELLENT  
VERY GOOD  
SLIGHT  
IGI LG634481475  
Comments: This Laboratory Grown Diamond was created by Chemical Vapor Deposition (CVD) growth process.  
Type IIa  
Light Brown

**LABORATORY GROWN DIAMOND REPORT**

July 4, 2024  
IGI Report Number **LG634481475**  
Description **LABORATORY GROWN DIAMOND**  
Shape and Cutting Style **EMERALD CUT**  
Measurements **7.83 X 5.59 X 3.54 MM**

**GRADING RESULTS**

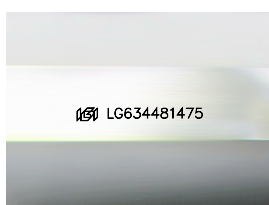
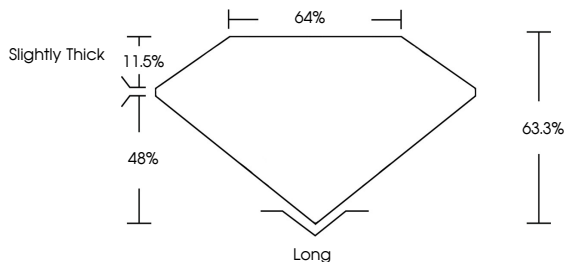
Carat Weight **1.52 CARAT**  
Color Grade **S-T**  
Clarity Grade **VS 2**

**ADDITIONAL GRADING INFORMATION**

Polish **EXCELLENT**  
Symmetry **VERY GOOD**  
Fluorescence **SLIGHT**  
Inscription(s) **IGI LG634481475**

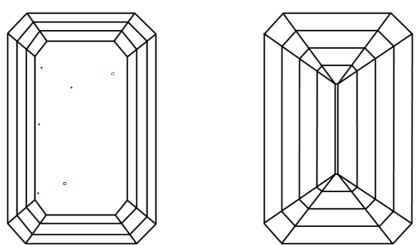
Comments: This Laboratory Grown Diamond was created by Chemical Vapor Deposition (CVD) growth process.  
Type IIa  
Light Brown

**PROPORTIONS**



Sample Image Used

**CLARITY CHARACTERISTICS**



**KEY TO SYMBOLS**

Red symbols indicate internal characteristics.  
Green symbols indicate external characteristics.

**COLOR**

D E F G H I J Faint Very Light Light

**CLARITY**

IF	VS <sup>1-2</sup>	VS <sup>1-2</sup>	SI <sup>1-2</sup>	I <sup>1-3</sup>
Internally Flawless	Very Very Slightly Included	Very Slightly Included	Slightly Included	Included

