



ELECTRONIC COPY

LABORATORY GROWN DIAMOND REPORT

May 21, 2024	
IGI Report Number	LG635495450
Description	LABORATORY GROWN DIAMOND
Shape and Cutting Style	MARQUISE BRILLIANT
Measurements	12.47 X 5.99 X 3.73 MM

GRADING RESULTS

Carat Weight	1.59 CARAT
Color Grade	E
Clarity Grade	VS 1

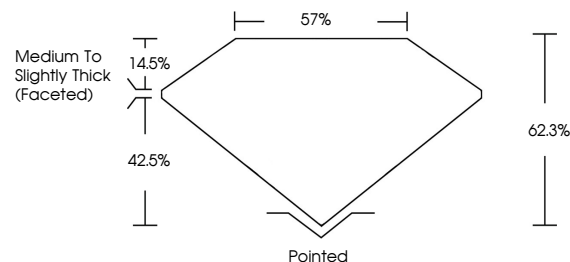
ADDITIONAL GRADING INFORMATION

Polish	EXCELLENT
Symmetry	EXCELLENT
Fluorescence	NONE
Inscription(s)	15 LG635495450

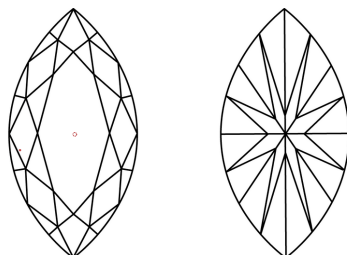
Comments: This Laboratory Grown Diamond was created by Chemical Vapor Deposition (CVD) growth process and may include post-growth treatment.
Type IIa

LG635495450
Report verification at lgi.org

PROPORTIONS

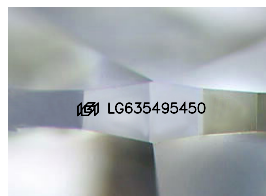


CLARITY CHARACTERISTICS



KEY TO SYMBOLS

Red symbols indicate internal characteristics.
Green symbols indicate external characteristics.



Sample Image Used

COLOR

D E F G H I J Faint Very Light Light

CLARITY

IF	VVS ^{1,2}	VS ^{1,2}	SI ^{1,2}	I ^{1,3}
Internally Flawless	Very Very Slightly Included	Very Slightly Included	Slightly Included	Included



© IGI 2020, International Gemological Institute

FD - 10 20

www.igi.org

DIAMOND REPORT



May 21, 2024

IGI Report Number LG635495450

Description **LABORATORY GROWN DIAMOND**Shape and Cutting Style **MARQUISE BRILLIANT**

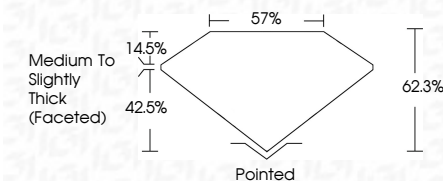
Measurements 12.47 X 5.99 X 3.73 MM

GRADING RESULTS

Carat Weight 1.59 CARAT

Color Grade E

Clarity Grade VS 1



ADDITIONAL GRADING INFORMATION

Polish **EXCELLENT**Symmetry **EXCELLENT**Fluorescence **NONE**Inscription(s) LG635495450

Comments: This Laboratory Grown Diamond was created by Chemical Vapor Deposition (CVD) growth process and may include post-growth treatment.
Type IIa



IG

May 21, 2024	GI Report No. LG38549540		MARQUESE BRILLIANT	
12.47 X 5.99 X 3.73 MM	Color	Carat Weight	1.59 CARAT	
	Color Grade	E	VS 1	
	Clarity Grade	Depth	62.3%	
	Table	Girdle	57%	
	Med to Slightly Thick (Faceted)			
	Quiet	Polished	EXCELLENT	
	Symmetry	EXCELLENT	NONE	
	Fluorescence	(@ LG38549540)		
<p>Comments: The Laboratory Crown Diamond was grown using a CVD growth process and may include post-growth treatment.</p> <p>Type IIA</p>				

Comments:
This Laboratory Grown Diamond was created by Chemical Vapor Deposition (CVD) growth process and may include post-growth treatment.