

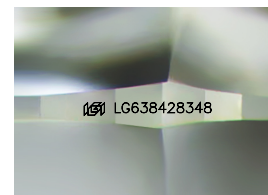
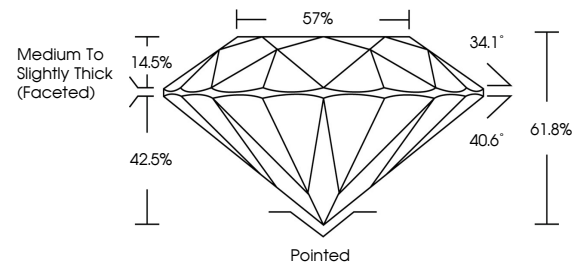


**ELECTRONIC COPY**

## LABORATORY GROWN DIAMOND REPORT

LG638428348  
Report verification at [igi.org](https://igi.org)

## PROPORTIONS



Sample Image Used

**COLOR**

D E F G H I J Faint Very Light Light

## CLARITY

IF	VVS <sup>1-2</sup>	VS <sup>1-2</sup>	SI <sup>1-2</sup>	I <sup>1-3</sup>
Internally Flawless	Very Very Slightly Included	Very Slightly Included	Slightly Included	Included



© IGI 2020, International Gemological Institute

FD - 10 20

**www.igi.org**

## LABORATORY GROWN DIAMOND REPORT



September 26, 2024

IGI Report Number **LG638428348**Description **LABORATORY GROWN DIAMOND**Shape and Cutting Style **ROUND BRILLIANT**

Measurements 8.03 - 8.07 X 4.98 MM

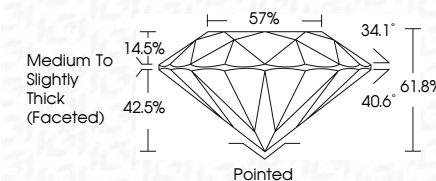
## GRADING RESULTS

Carat Weight **2.00 CARATS**

Color Grade **E**

Clarity Grade SI 1

Cut Grade **EXCELLENT**



### ADDITIONAL GRADING INFORMATION

Polish **EXCELLENT**Symmetry **EXCELLENT**Fluorescence **NONE**Inscription(s)  LG638428348

Comments: This Laboratory Grown Diamond was created by Chemical Vapor Deposition (CVD) growth process.  
Type IIa



September 26, 2024  
IGI Report No LG6384  
ROUND BRILLIANT

8.03 - 8.07 X 4.95 MM	Carat Weight	2.00 CARATS
	Color Grade	E
	Clarity Grade	S1
	Cut Grade	EXCELLENT
	Depth	61.8%
	Table	57%
	Girdle	Medium to Slightly Thick (Faceted)
	Culet	Pointed
	Polish	EXCELLENT
	Symmetry	EXCELLENT
	Fluorescence	NONE

**Comments:**  
This Laboratory Grown Diamond was created by Chemical Vapor Deposition (CVD) growth process.