



ELECTRONIC COPY

LABORATORY GROWN DIAMOND REPORT

LG638428406
Report verification at igi.org

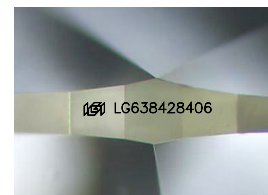
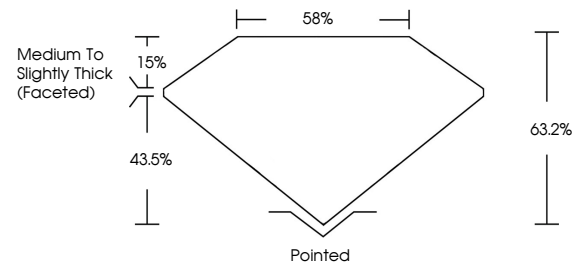
September 24, 2024	
IGI Report Number	LG638428406
Description	LABORATORY GROWN DIAMOND
Shape and Cutting Style	PEAR BRILLIANT
Measurements	8.94 X 5.51 X 3.48 MM
GRADING RESULTS	
Carat Weight	1.00 CARAT
Color Grade	D
Clarity Grade	SI 1

ADDITIONAL GRADING INFORMATION

Polish	EXCELLENT
Symmetry	EXCELLENT
Fluorescence	NONE
Inscription(s)	15 LG638428406

Comments: This Laboratory Grown Diamond was created by Chemical Vapor Deposition (CVD) growth process.
Type IIa

PROPORTIONS



Sample Image Used

COLOR

D E F G H I J Faint Very Light Light

CLARITY

IF	VVS ¹⁻²	VS ¹⁻²	SI ¹⁻²	I ¹⁻³
Internally Flawless	Very Very Slightly Included	Very Slightly Included	Slightly Included	Included



© IGI 2020, International Gemological Institute

FD - 10 20

www.igi.org

LABORATORY GROWN DIAMOND REPORT



September 24, 2024

IGI Report Number **LG638428406**

Description	LABORATORY GROWN DIAMOND
-------------	--------------------------

Shape and Cutting Style **PEAR BRILLIANT**

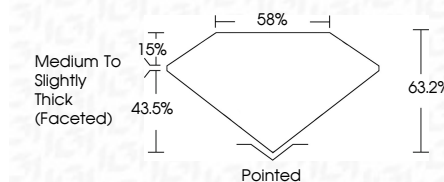
Measurements **8.94 X 5.51 X 3.48 MM**

GRADING RESULTS

Carat Weight 1.00 CARAT

Color Grade

Clarity Grade SI 1



ADDITIONAL GRADING INFORMATION

Polish EXCELLENT

Symmetry **EXCELLENT**Fluorescence **NONE**Inscription(s) LG638428406

Comments: This Laboratory Grown Diamond was created by Chemical Vapor Deposition (CVD) growth process.
Type IIa



September 24, 2024
IGI Report No LG638428406
PEAR BRILLIANT

Carat Weight	1.00 CARAT
Color Grade	D
Clarity Grade	SI 1
Depth	63.2%
Table	58%
Grade	Medium To Slightly Thick (faceted)
Culet	Pointed
Polish	EXCELLENT
Symmetry	EXCELLENT
Fluorescence	NONE
Inscriptions	see Listings above

Comments:
This Laboratory Grown Diamond was created by Chemical Vapor Deposition (CVD) growth process.