

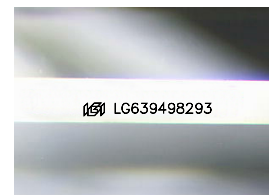
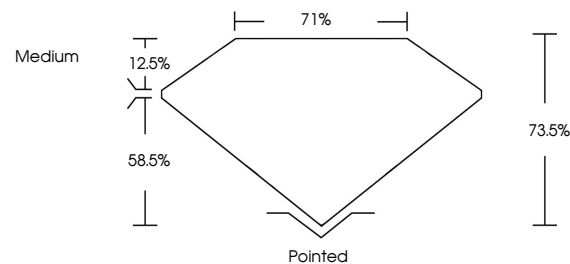


ELECTRONIC COPY

LABORATORY GROWN DIAMOND REPORT

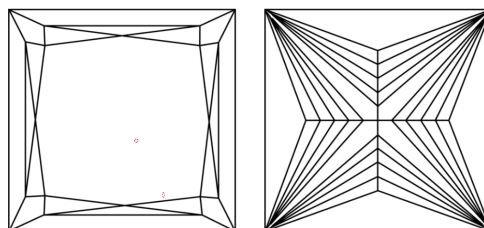
LG639498293
Report verification at lgi.org

PROPORTIONS



Sample Image Used

CLARITY CHARACTERISTICS



KEY TO SYMBOLS

Red symbols indicate internal characteristics.
Green symbols indicate external characteristics.

COLOR

D E F G H I J Faint Very Light Light

CLARITY

IF	VVS ¹⁻²	VS ¹⁻²	SI ¹⁻²	I ¹⁻³
Internally Flawless	Very Very Slightly Included	Very Slightly Included	Slightly Included	Included

LABORATORY GROWN DIAMOND REPORT



June 14, 2024

IGI Report Number **LG639498293**

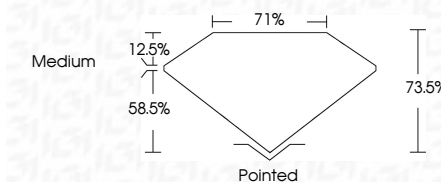
Description	LABORATORY GROWN DIAMOND
-------------	--------------------------

Shape and Cutting Style **PRINCESS CUT**

Measurements **6.35 X 6.30 X 4.63 MM**

GRADING RESULTS

Carat Weight 1.58 CARAT

Color Grade EClarity Grade WS 2

ADDITIONAL GRADING INFORMATION

Polish **EXCELLENT**Symmetry **EXCELLENT**Fluorescence **NONE**Inscription(s) LG639498293

Comments: This Laboratory Grown Diamond was created by Chemical Vapor Deposition (CVD) growth process.
Type IIa



© IGI 2020, International Gemological Institute

FD - 10 20



THIS DOCUMENT WAS PRODUCED WITH THE FOLLOWING SECURITY MEASURES: SPECIAL DOCUMENT PAPER, INK SCREENS, WATERMARK, BACKGROUND DESIGNS, HOLOGRAM AND OTHER SECURITY FEATURES NOT LISTED AND DO EXCEED DOCUMENT SECURITY INDUSTRY GUIDELINES

June 14, 2024
 IGI Report No LG639498293
 PRINCESS CLIT

3.35 X 6.30 X 4.63 MM	Carat Weight	1.58 CARAT
	Color Grade	E
	Clarity Grade	VVS 2
	Depth	73.6%
	Table	71%
	Girdle	Medium
	Culet	Pointed
	Polish	EXCELLENT
	Symmetry	EXCELLENT
	Fluorescence	NONE
	Comments(s)	see 1CA594982903

Comments:
This Laboratory Grown Diamond was created by Chemical Vapor Deposition (CVD) growth process.