



**ELECTRONIC COPY**

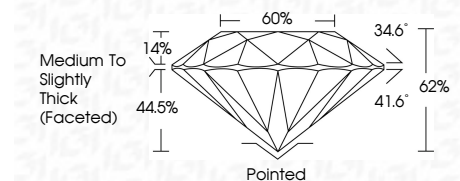
640465891  
Report verification at igi.org



February 24, 2026  
IGI Report Number **640465891**  
Description **NATURAL DIAMOND**  
Shape and Cutting Style **ROUND BRILLIANT**  
Measurements **10.53 - 10.61 X 6.56 MM**

**GRADING RESULTS**

Carat Weight **4.50 CARATS**  
Color Grade **H**  
Clarity Grade **VVS 2**  
Cut Grade **EXCELLENT**



**ADDITIONAL GRADING INFORMATION**

Polish **EXCELLENT**  
Symmetry **EXCELLENT**  
Fluorescence **VERY SLIGHT**  
Inscription(s) **(IGI) 640465891**



**IGI**

February 24, 2026  
IGI Report No 640465891  
**ROUND BRILLIANT**  
**10.53 - 10.61 X 6.56 MM**  
Carat Weight **4.50 CARATS**  
Color Grade **H**  
Clarity Grade **VVS 2**  
Depth **EXCELLENT**  
Table **62%**  
Girdle **65%**  
Medium To Slightly Thick (Faceted)  
Culet **Pointed**  
Polish **EXCELLENT**  
Symmetry **EXCELLENT**  
Fluorescence **VERY SLIGHT**  
Inscriptions(s) **(IGI) 640465891**

**DIAMOND REPORT**

February 24, 2026  
IGI Report Number **640465891**  
Description **NATURAL DIAMOND**  
Shape and Cutting Style **ROUND BRILLIANT**  
Measurements **10.53 - 10.61 X 6.56 MM**

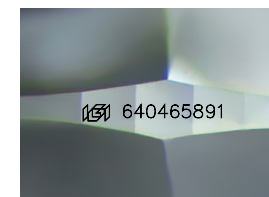
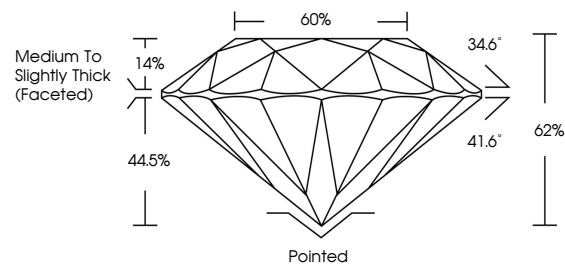
**GRADING RESULTS**

Carat Weight **4.50 CARATS**  
Color Grade **H**  
Clarity Grade **VVS 2**  
Cut Grade **EXCELLENT**

**ADDITIONAL GRADING INFORMATION**

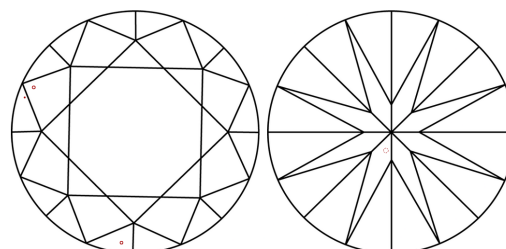
Polish **EXCELLENT**  
Symmetry **EXCELLENT**  
Fluorescence **VERY SLIGHT**  
Inscription(s) **(IGI) 640465891**

**PROPORTIONS**



Sample Image Used

**CLARITY CHARACTERISTICS**



**KEY TO SYMBOLS**

Red symbols indicate internal characteristics.  
Green symbols indicate external characteristics.

**COLOR**

D - F	G - J	K - M	N - R	S - Z	FANCY
Colorless	Near Colorless	Slightly Tinted	Very Light Color	Light Color	

**CLARITY**

FL	IF	VVS 1-2	VS 1-2	SI 1-2	I 1-3
Flawless	Internally Flawless	Very Very Slightly Included	Very Slightly Included	Slightly Included	Included

