



**ELECTRONIC COPY**

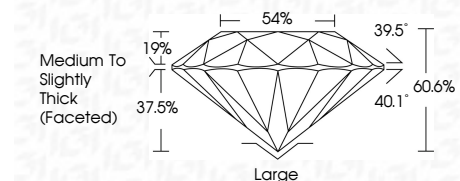
LG645461992  
Report verification at igi.org



August 1, 2024  
IGI Report Number **LG645461992**  
Description **LABORATORY GROWN DIAMOND**  
Shape and Cutting Style **ROUND MODIFIED BRILLIANT**  
Measurements **8.20 - 8.26 X 4.99 MM**

**GRADING RESULTS**

Carat Weight **2.27 CARATS**  
Color Grade **FANCY INTENSE PINK**  
Clarity Grade **VS 1**  
Cut Grade **FAIR**



**ADDITIONAL GRADING INFORMATION**

Polish **EXCELLENT**  
Symmetry **EXCELLENT**  
Fluorescence **SLIGHT**  
Inscription(s) **IGI LG645461992**  
Comments: This Laboratory Grown Diamond was created by Chemical Vapor Deposition (CVD) growth process. Indications of post-growth treatment.



August 1, 2024	IGI Report No LG645461992	2.27 CARATS	Large
ROUND MODIFIED BRILLIANT	8.20 - 8.26 X 4.99 MM	FANCY INTENSE PINK	EXCELLENT
Carat Weight	Color Grade	VS 1	EXCELLENT
Color Grade	Clarity Grade	FAIR	SLIGHT
Clarity Grade	Depth	60.6%	SLIGHT
Depth	Table	54%	IGI LG645461992
Table	Grade	Medium To Slightly Thick (Faceted)	
Grade	Culet		
Culet	Polish		
Polish	Symmetry		
Symmetry	Fluorescence		
Fluorescence	Inscription(s)		
Inscription(s)			

Comments: This Laboratory Grown Diamond was created by Chemical Vapor Deposition (CVD) growth process. Indications of post-growth treatment.

August 1, 2024  
IGI Report Number **LG645461992**  
Description **LABORATORY GROWN DIAMOND**  
Shape and Cutting Style **ROUND MODIFIED BRILLIANT**  
Measurements **8.20 - 8.26 X 4.99 MM**

**GRADING RESULTS**

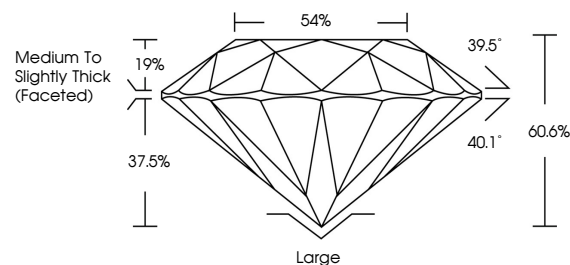
Carat Weight **2.27 CARATS**  
Color Grade **FANCY INTENSE PINK**  
Clarity Grade **VS 1**  
Cut Grade **FAIR**

**ADDITIONAL GRADING INFORMATION**

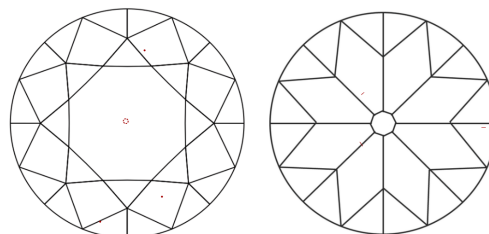
Polish **EXCELLENT**  
Symmetry **EXCELLENT**  
Fluorescence **SLIGHT**  
Inscription(s) **IGI LG645461992**

Comments: This Laboratory Grown Diamond was created by Chemical Vapor Deposition (CVD) growth process. Indications of post-growth treatment.

**PROPORTIONS**

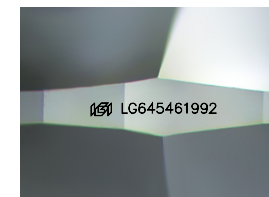


**CLARITY CHARACTERISTICS**



**KEY TO SYMBOLS**

Red symbols indicate internal characteristics.  
Green symbols indicate external characteristics.



Sample Image Used

**COLOR**

D E F G H I J Faint Very Light Light

**CLARITY**

IF	VS <sup>1-2</sup>	VS <sup>1-2</sup>	SI <sup>1-2</sup>	I <sup>1-3</sup>
Internally Flawless	Very Very Slightly Included	Very Slightly Included	Slightly Included	Included

