



ELECTRONIC COPY

LG645465582
Report verification at igi.org



July 30, 2024

IGI Report Number **LG645465582**

Description **LABORATORY GROWN DIAMOND**

Shape and Cutting Style **HEXAGONAL MIXED CUT**

Measurements **12.52 X 7.01 X 4.00 MM**

GRADING RESULTS

Carat Weight **2.28 CARATS**

Color Grade **F**

Clarity Grade **VS 1**

July 30, 2024
IGI Report Number **LG645465582**
Description **LABORATORY GROWN DIAMOND**
Shape and Cutting Style **HEXAGONAL MIXED CUT**
Measurements **12.52 X 7.01 X 4.00 MM**

GRADING RESULTS

Carat Weight **2.28 CARATS**

Color Grade **F**

Clarity Grade **VS 1**

ADDITIONAL GRADING INFORMATION

Polish **EXCELLENT**

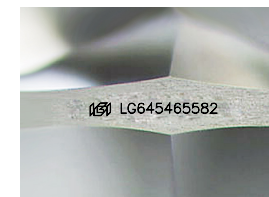
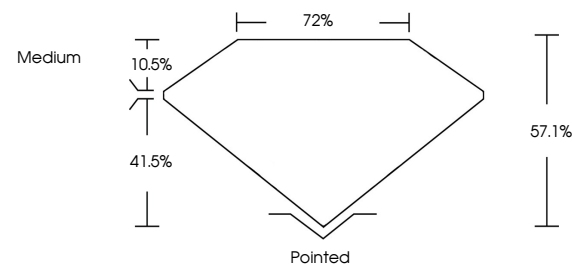
Symmetry **EXCELLENT**

Fluorescence **NONE**

Inscription(s) **IGI LG645465582**

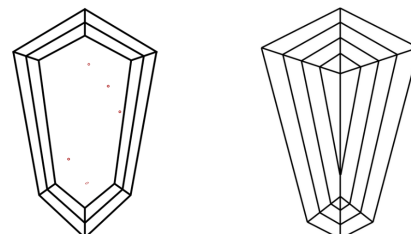
Comments: This Laboratory Grown Diamond was created by Chemical Vapor Deposition (CVD) growth process.
Type IIa

PROPORTIONS



Sample Image Used

CLARITY CHARACTERISTICS



KEY TO SYMBOLS

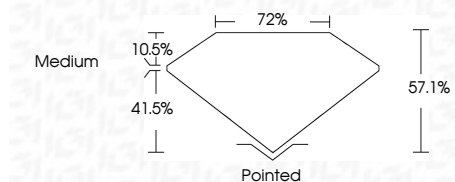
Red symbols indicate internal characteristics.
Green symbols indicate external characteristics.

COLOR

D E F G H I J Faint Very Light Light

CLARITY

IF	VS ¹⁻²	VS ¹⁻²	SI ¹⁻²	I ¹⁻³
Internally Flawless	Very Very Slightly Included	Very Slightly Included	Slightly Included	Included



ADDITIONAL GRADING INFORMATION

Polish **EXCELLENT**

Symmetry **EXCELLENT**

Fluorescence **NONE**

Inscription(s) **IGI LG645465582**

Comments: This Laboratory Grown Diamond was created by Chemical Vapor Deposition (CVD) growth process.
Type IIa



IGI



July 30, 2024
IGI Report No LG645465582
HEXAGONAL MIXED CUT
12.52 X 7.01 X 4.00 MM
2.28 CARATS
F
Color Grade
VS 1
Depth 57.1%
Table 72%
Girdle Medium
Pointed
EXCELLENT
EXCELLENT
NONE
IGI LG645465582
Comments: This Laboratory Grown Diamond was created by Chemical Vapor Deposition (CVD) growth process.
Type IIa