



ELECTRONIC COPY

647428503
Report verification at igi.org



August 21, 2024
IGI Report Number **647428503**
Description **NATURAL DIAMOND**
Shape and Cutting Style **EMERALD CUT**
Measurements **9.74 X 6.76 X 4.63 MM**
GRADING RESULTS
Carat Weight **3.00 CARATS**
Color Grade **K**
Clarity Grade **INTERNALLY FLAWLESS**
Cut Grade **VERY GOOD**

DIAMOND REPORT

August 21, 2024
IGI Report Number **647428503**
Description **NATURAL DIAMOND**
Shape and Cutting Style **EMERALD CUT**
Measurements **9.74 X 6.76 X 4.63 MM**

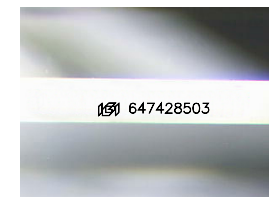
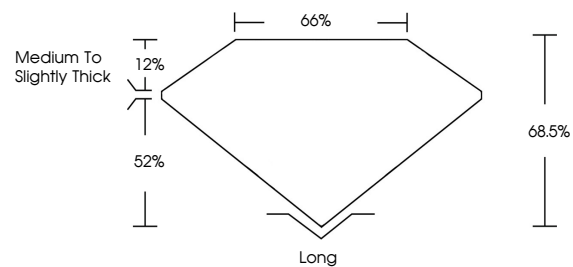
GRADING RESULTS

Carat Weight **3.00 CARATS**
Color Grade **K**
Clarity Grade **INTERNALLY FLAWLESS**
Cut Grade **VERY GOOD**

ADDITIONAL GRADING INFORMATION

Polish **EXCELLENT**
Symmetry **EXCELLENT**
Fluorescence **NONE**
Inscription(s) **647428503**

PROPORTIONS



Sample Image Used

CLARITY CHARACTERISTICS



KEY TO SYMBOLS

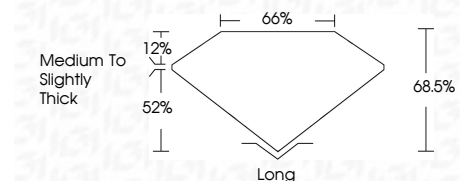
Red symbols indicate internal characteristics.
Green symbols indicate external characteristics.

COLOR

D - F	G - J	K - M	N - R	S - Z	FANCY
Colorless	Near Colorless	Slightly Tinted	Very Light Color	Light Color	

CLARITY

IF	VS ¹⁻²	VS ¹⁻²	SI ¹⁻²	I ¹⁻³
Internally Flawless	Very Very Slightly Included	Very Slightly Included	Slightly Included	Included



ADDITIONAL GRADING INFORMATION

Polish **EXCELLENT**
Symmetry **EXCELLENT**
Fluorescence **NONE**
Inscription(s) **647428503**



IGI



August 21, 2024
IGI Report No 647428503
EMERALD CUT
9.74 X 6.76 X 4.63 MM
3.00 CARATS
K
Color Grade
Clarity Grade
Depth
Table
Girdle
Medium To Slightly Thick
Long
Polish
Symmetry
Fluorescence
Inscription(s)
EXCELLENT
EXCELLENT
VERY GOOD
68.5%
66%
NONE
 647428503