



**ELECTRONIC COPY**

## LABORATORY GROWN DIAMOND REPORT

September 3, 2024	
IGI Report Number	LG647432584
Description	LABORATORY GROWN DIAMOND
Shape and Cutting Style	TRIANGULAR BRILLIANT
Measurements	8.63 X 9.32 X 4.79 MM

## GRADING RESULTS

Carat Weight	2.01 CARATS
Color Grade	E
Clarity Grade	VS 1

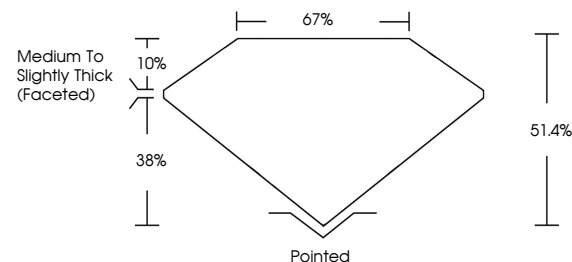
### ADDITIONAL GRADING INFORMATION

Polish	EXCELLENT
Symmetry	EXCELLENT
Fluorescence	NONE
Inscription(s)	15 LG647432584

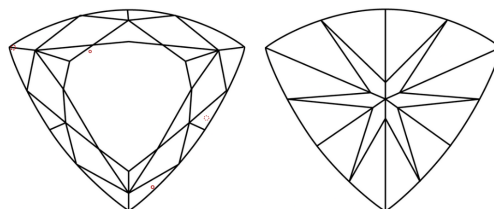
Comments: This Laboratory Grown Diamond was created by Chemical Vapor Deposition (CVD) growth process.  
Type IIa

LG647432584  
Report verification at [lgi.org](https://lgi.org)

## PROPORTIONS

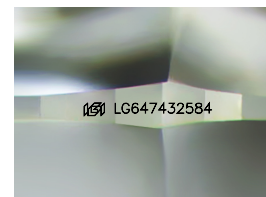


## CLARITY CHARACTERISTICS



## KEY TO SYMBOLS

Red symbols indicate internal characteristics.  
Green symbols indicate external characteristics.



Sample Image Used

## COLOR

D E F G H I J Faint Very Light Light

## CLARITY

IF	VVS <sup>1,2</sup>	VS <sup>1,2</sup>	SI <sup>1,2</sup>	I <sup>1,3</sup>
Internally Flawless	Very Very Slightly Included	Very Slightly Included	Slightly Included	Included



© IGI 2020, International Gemological Institute

FD - 10 20

www.igi.org

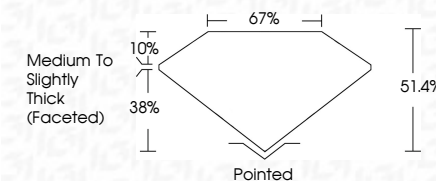
## LABORATORY GROWN DIAMOND REPORT



September 3, 2024	
IGI Report Number	LG647432584
Description	LABORATORY GROWN DIAMOND
Shape and Cutting Style	TRIANGULAR BRILLIANT
Measurements	8.63 X 9.32 X 4.79 MM

## GRADING RESULTS

Carat Weight	2.01 CARATS
Color Grade	E
Clarity Grade	VS 1



### ADDITIONAL GRADING INFORMATION

Polish	EXCELLENT
Symmetry	EXCELLENT
Fluorescence	NONE
Inscription(s)	163 LG 647432584

Comments: This Laboratory Grown Diamond was created by Chemical Vapor Deposition (CVD) growth process.  
Type IIa



September 3, 2024  
GI Report No LG647432584  
TRIANGULAR BRILLIANT

6.63 X 9.32 X 4.79 MM	2.01 CARATS
Carat Weight	E
Color Grade	VS 1
Clarity Grade	61.4%
Depth	67%
Table	Medium To Slightly Thick (rounded)
Girdle	Pointed
Fluorescence	EXCELLENT
Symmetry	EXCELLENT
Fluorescence	NONE
Fluorescence	gem / 6467 / 6052

**Comments:**  
This Laboratory Grown Diamond was created by Chemical Vapor Deposition (CVD) growth process.

THIS DOCUMENT WAS PRODUCED WITH THE FOLLOWING SECURITY MEASURES: SPECIAL DOCUMENT PAPER, INK SCREENS, WATERMARK, BACKGROUND DESIGNS, HOLOGRAM AND OTHER SECURITY FEATURES NOT LISTED AND DO EXCEED DOCUMENT SECURITY INDUSTRY GUIDELINE