



**ELECTRONIC COPY**

## LABORATORY GROWN DIAMOND REPORT

August 30, 2024	
IGI Report Number	LG649408005
Description	LABORATORY GROWN DIAMOND
Shape and Cutting Style	OVAL MODIFIED BRILLIANT
Measurements	10.69 X 7.22 X 4.97 MM

## GRADING RESULTS

Carat Weight	3.01 CARATS
Color Grade	FANCY VIVID BLUE
Clarity Grade	VVS 2

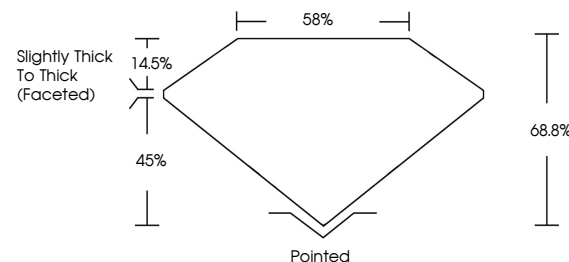
### ADDITIONAL GRADING INFORMATION

Polish	EXCELLENT
Symmetry	EXCELLENT
Fluorescence	NONE
Inscription(s)	15 LG649408005

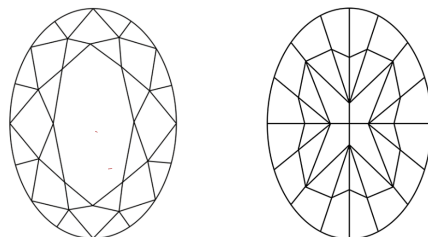
Comments: This Laboratory Grown Diamond was created by Chemical Vapor Deposition (CVD) growth process.  
Indications of post-growth treatment.

LG649408005  
Report verification at [lgi.org](https://lgi.org)

## PROPORTIONS



## CLARITY CHARACTERISTICS



### KEY TO SYMBOLS

Red symbols indicate internal characteristics.  
Green symbols indicate external characteristics.

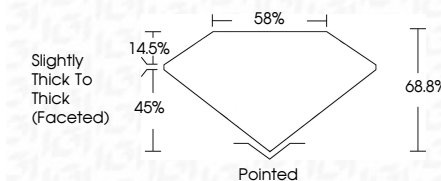
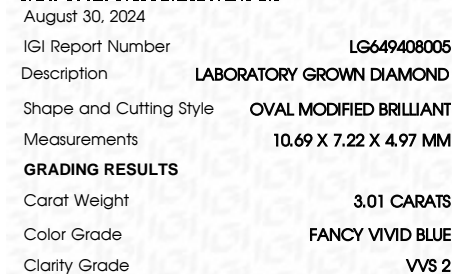


## COLOR

D E F G H I J Faint Very Light Light

## CLARITY

IF	VS <sup>1-2</sup>	VS <sup>1-2</sup>	SI <sup>1-2</sup>	I <sup>1-3</sup>
Internally Flawless	Very Very Slightly Included	Very Slightly Included	Slightly Included	Included



### ADDITIONAL GRADING INFORMATION

Polish	EXCELLENT
Symmetry	EXCELLENT
Fluorescence	NONE
Inscription(s)	 LG649408005
<p>Comments: This Laboratory Grown Diamond was created by Chemical Vapor Deposition (CVD) growth process.</p> <p>Indications of post-growth treatment.</p>	



© IGI 2020, International Gemological Institute

FD - 10 20

**www.igi.org**

August 30, 2024  
GI Report No LG649408005  
OVAL MODEIFIED BRILLIANT

10.69 X 7.72 X 4.97 MM	3.01 CARATS	
Carat Weight	FANCY VIVID BLUE	
Color Grade	VVS 2	
Clarity Grade	68.6%	
Depth	59%	
Table	Slightly Thick To Thick (Faceted)	
Girdle	Pointed	
Culet	EXCELLENT	
Polish	EXCELLENT	
Symmetry	NONE	
Fluorescence	None / Catastrophic	
Comments		

**Comments:**  
This Laboratory Grown Diamond was created by Chemical Vapor Deposition (CVD) growth process.