



ELECTRONIC COPY

LG649421559
Report verification at igi.org



September 5, 2024
IGI Report Number LG649421559
Description LABORATORY GROWN DIAMOND

Shape and Cutting Style CUT CORNERED RECTANGULAR MODIFIED BRILLIANT

Measurements 10.39 X 7.35 X 4.88 MM

GRADING RESULTS

Carat Weight 3.56 CARATS
Color Grade FANCY VIVID PINK
Clarity Grade VS 1

LABORATORY GROWN DIAMOND REPORT

September 5, 2024
IGI Report Number LG649421559
Description LABORATORY GROWN DIAMOND
Shape and Cutting Style CUT CORNERED RECTANGULAR MODIFIED BRILLIANT
Measurements 10.39 X 7.35 X 4.88 MM

GRADING RESULTS

Carat Weight 3.56 CARATS
Color Grade FANCY VIVID PINK
Clarity Grade VS 1

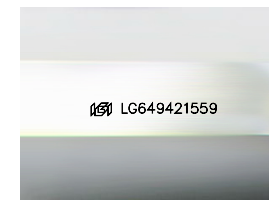
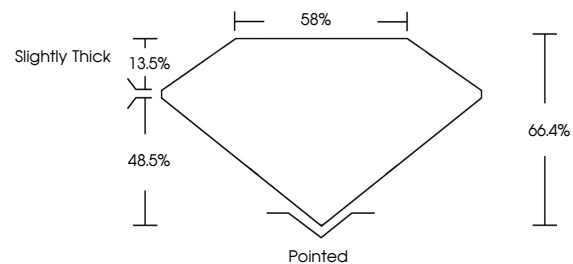
ADDITIONAL GRADING INFORMATION

Polish EXCELLENT
Symmetry EXCELLENT
Fluorescence SLIGHT
Inscription(s) LG649421559

Comments: This Laboratory Grown Diamond was created by Chemical Vapor Deposition (CVD) growth process.
Indications of post-growth treatment.

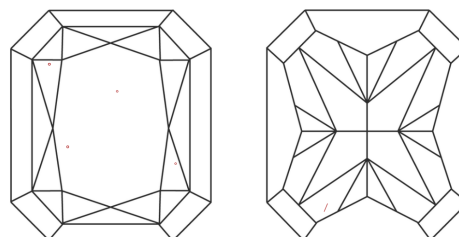
Secondary color: Orange

PROPORTIONS



Sample Image Used

CLARITY CHARACTERISTICS



KEY TO SYMBOLS

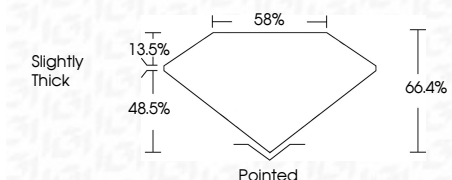
Red symbols indicate internal characteristics.
Green symbols indicate external characteristics.

COLOR

D E F G H I J Faint Very Light Light

CLARITY

IF VS 1-2 VS 1-2 SI 1-2 I 1-3
Internally Flawless Very Very Slightly Included Very Slightly Included Slightly Included Included



ADDITIONAL GRADING INFORMATION

Polish EXCELLENT
Symmetry EXCELLENT
Fluorescence SLIGHT
Inscription(s) LG649421559
Comments: This Laboratory Grown Diamond was created by Chemical Vapor Deposition (CVD) growth process.
Indications of post-growth treatment.
Secondary color: Orange



IGI



September 5, 2024
IGI Report No LG649421559
CUT CORNERED RECT. MODIFIED BRILLIANT
10.39 X 7.35 X 4.88 MM
3.56 CARATS
FANCY VIVID PINK
VS 1
66.4%
58%
Slightly Thick
Pointed
EXCELLENT
EXCELLENT
SLIGHT
LG649421559
Comments: This Laboratory Grown Diamond was created by Chemical Vapor Deposition (CVD) growth process.
Indications of post-growth treatment.
Secondary color: Orange