



ELECTRONIC COPY

LABORATORY GROWN DIAMOND REPORT

| | |
|-------------------------|--------------------------|
| September 7, 2024 | |
| IGI Report Number | LG649441362 |
| Description | LABORATORY GROWN DIAMOND |
| Shape and Cutting Style | KITE BRILLIANT CUT |
| Measurements | 10.24 X 6.71 X 3.42 MM |

GRADING RESULTS

| | |
|---------------|------------|
| Carat Weight | 1.04 CARAT |
| Color Grade | E |
| Clarity Grade | VVS 2 |

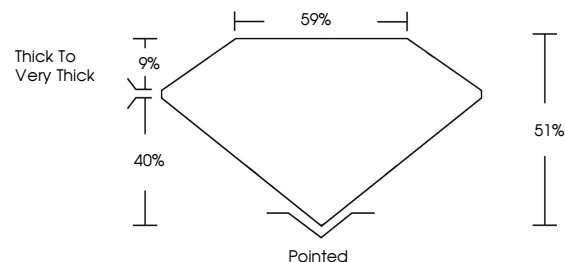
ADDITIONAL GRADING INFORMATION

| | |
|----------------|-----------------|
| Polish | EXCELLENT |
| Symmetry | VERY GOOD |
| Fluorescence | NONE |
| Inscription(s) | 151 LG649441362 |

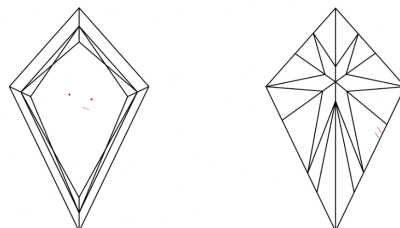
Comments: This Laboratory Grown Diamond was created by Chemical Vapor Deposition (CVD) growth process.
Type IIa

LG649441362
Report verification at igi.org

PROPORTIONS

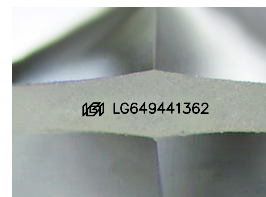


CLARITY CHARACTERISTICS



KEY TO SYMBOLS

Red symbols indicate internal characteristics.
Green symbols indicate external characteristics.



Sample Image Used

COLOR

D E F G H I J Faint Very Light Light

CLARITY

| IF | VVS ¹⁻² | VS ¹⁻² | SI ¹⁻² | I ¹⁻³ |
|---------------------|-----------------------------|------------------------|-------------------|------------------|
| Internally Flawless | Very Very Slightly Included | Very Slightly Included | Slightly Included | Included |



© IGI 2020, International Gemological Institute

FD - 10 20

www.igi.org

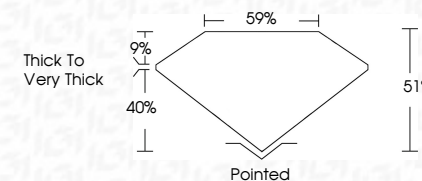
LABORATORY GROWN DIAMOND REPORT



| | |
|-------------------------|--------------------------|
| September 7, 2024 | |
| IGI Report Number | LG649441362 |
| Description | LABORATORY GROWN DIAMOND |
| Shape and Cutting Style | KITE BRILLIANT CUT |
| Measurements | 10.24 X 6.71 X 3.42 MM |

GRADING RESULTS

| | |
|---------------|------------|
| Carat Weight | 1.04 CARAT |
| Color Grade | E |
| Clarity Grade | VVS 2 |



ADDITIONAL GRADING INFORMATION

| | |
|----------------|-------------|
| Polish | EXCELLENT |
| Symmetry | VERY GOOD |
| Fluorescence | NONE |
| Inscription(s) | LG649441362 |

Comments: This Laboratory Grown Diamond was created by Chemical Vapor Deposition (CVD) growth process.
Type IIa



September 7, 2024
 IGI Report No LG649441362
 KITE BRILLIANT CUT

| | | |
|------------------------|---------------|---------------------|
| 10.24 X 6.71 X 3.42 MM | Carat Weight | 1.04 CARAT |
| | Color Grade | E |
| | Clarity Grade | VVS 2 |
| | Depth | 51% |
| | Table | 59% |
| | Grade | Thick To Very Thick |
| | Culet | Pointed |
| | Polish | EXCELLENT |
| | Symmetry | VERY GOOD |
| | Fluorescence | NONE |
| | | gem/15490411590 |

Comments:
This Laboratory Grown Diamond was
created by Chemical Vapor Deposition
(CVD) growth process.