



**ELECTRONIC COPY**

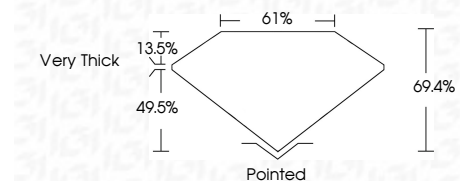
LG650409290  
Report verification at igi.org



September 10, 2024  
IGI Report Number **LG650409290**  
Description **LABORATORY GROWN DIAMOND**  
Shape and Cutting Style **CUT CORNERED  
RECTANGULAR MODIFIED  
BRILLIANT**  
Measurements **13.78 X 9.52 X 6.61 MM**

**GRADING RESULTS**

Carat Weight **8.50 CARATS**  
Color Grade **FANCY VIVID YELLOW**  
Clarity Grade **VS 2**



**ADDITIONAL GRADING INFORMATION**

Polish **EXCELLENT**  
Symmetry **EXCELLENT**  
Fluorescence **NONE**  
Inscription(s) **IGI LG650409290**

Comments: This Laboratory Grown Diamond was created by Chemical Vapor Deposition (CVD) growth process.



September 10, 2024  
IGI Report No. LG650409290  
CUT CORNERED RECT. MODIFIED BRILLIANT  
8.50 CARATS  
FANCY VIVID YELLOW  
VS 2  
69.4%  
61%  
Very Thick  
Pointed  
EXCELLENT  
EXCELLENT  
NONE  
IGI LG650409290  
Comments: This Laboratory Grown Diamond was created by Chemical Vapor Deposition (CVD) growth process.

**LABORATORY GROWN DIAMOND REPORT**

September 10, 2024  
IGI Report Number **LG650409290**  
Description **LABORATORY GROWN DIAMOND**  
Shape and Cutting Style **CUT CORNERED RECTANGULAR  
MODIFIED BRILLIANT**  
Measurements **13.78 X 9.52 X 6.61 MM**

**GRADING RESULTS**

Carat Weight **8.50 CARATS**  
Color Grade **FANCY VIVID YELLOW**  
Clarity Grade **VS 2**

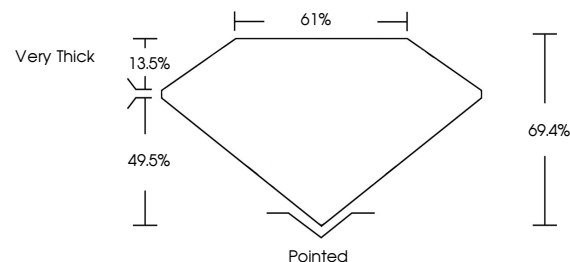
**ADDITIONAL GRADING INFORMATION**

Polish **EXCELLENT**  
Symmetry **EXCELLENT**  
Fluorescence **NONE**

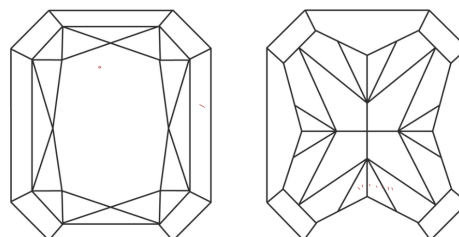
Inscription(s) **IGI LG650409290**

Comments: This Laboratory Grown Diamond was created by Chemical Vapor Deposition (CVD) growth process.

**PROPORTIONS**

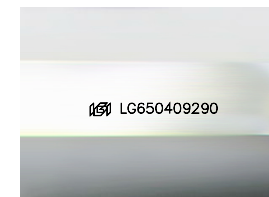


**CLARITY CHARACTERISTICS**



**KEY TO SYMBOLS**

Red symbols indicate internal characteristics.  
Green symbols indicate external characteristics.



Sample Image Used

**COLOR**

D E F G H I J Faint Very Light Light

**CLARITY**

IF	VS 1-2	VS 1-2	SI 1-2	I 1-3
Internally Flawless	Very Very Slightly Included	Very Slightly Included	Slightly Included	Included

