



**ELECTRONIC COPY**

LG651426483  
Report verification at igi.org



October 26, 2024

IGI Report Number **LG651426483**

Description **LABORATORY GROWN DIAMOND**

Shape and Cutting Style **EMERALD CUT**

Measurements **6.97 X 5.02 X 3.24 MM**

**GRADING RESULTS**

Carat Weight **1.10 CARAT**

Color Grade **FANCY VIVID PINK**

Clarity Grade **VS 2**

October 26, 2024  
IGI Report Number **LG651426483**  
Description **LABORATORY GROWN DIAMOND**  
Shape and Cutting Style **EMERALD CUT**  
Measurements **6.97 X 5.02 X 3.24 MM**

**GRADING RESULTS**

Carat Weight **1.10 CARAT**

Color Grade **FANCY VIVID PINK**

Clarity Grade **VS 2**

**ADDITIONAL GRADING INFORMATION**

Polish **EXCELLENT**

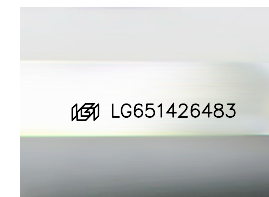
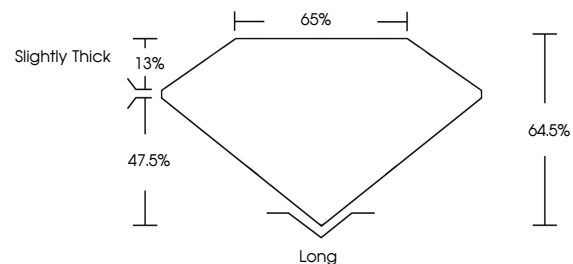
Symmetry **EXCELLENT**

Fluorescence **STRONG**

Inscription(s) **LG651426483**

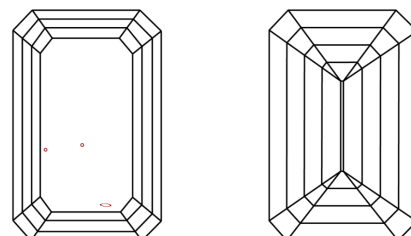
Comments: This Laboratory Grown Diamond was created by Chemical Vapor Deposition (CVD) growth process.  
Indications of post-growth treatment.

**PROPORTIONS**



Sample Image Used

**CLARITY CHARACTERISTICS**



**KEY TO SYMBOLS**

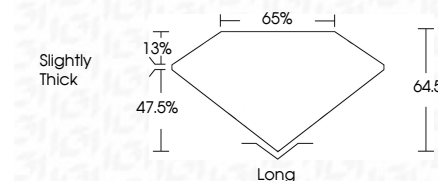
Red symbols indicate internal characteristics.  
Green symbols indicate external characteristics.

**COLOR**

D E F G H I J Faint Very Light Light

**CLARITY**

IF	VS <sup>1-2</sup>	VS <sup>1-2</sup>	SI <sup>1-2</sup>	I <sup>1-3</sup>
Internally Flawless	Very Very Slightly Included	Very Slightly Included	Slightly Included	Included



**ADDITIONAL GRADING INFORMATION**

Polish **EXCELLENT**

Symmetry **EXCELLENT**

Fluorescence **STRONG**

Inscription(s) **LG651426483**

Comments: This Laboratory Grown Diamond was created by Chemical Vapor Deposition (CVD) growth process.  
Indications of post-growth treatment.



**IGI**



October 26, 2024  
IGI Report No. LG651426483  
**EMERALD CUT**

**1.10 CARAT**  
Carat Weight  
**FANCY VIVID PINK**  
Color Grade

**VS 2**  
Clarity Grade  
**64.6%**  
Table  
**65%**  
Depth  
**Slightly Thick**  
Girdle

**Long**  
Culet  
**EXCELLENT**  
Polish  
**EXCELLENT**  
Symmetry  
**STRONG**  
Fluorescence  
**IGI LG651426483**  
Inscription(s)

Comments: This Laboratory Grown Diamond was created by Chemical Vapor Deposition (CVD) growth process.  
Indications of post-growth treatment.