



**ELECTRONIC COPY**

LG651435490  
Report verification at [igi.org](http://igi.org)



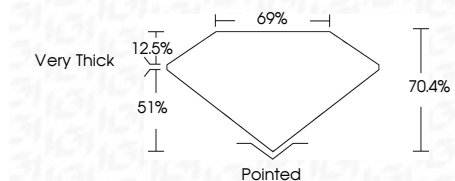
September 9, 2024  
IGI Report Number **LG651435490**  
Description **LABORATORY GROWN DIAMOND**

Shape and Cutting Style **CUT CORNERED  
RECTANGULAR MODIFIED  
BRILLIANT**

Measurements **11.51 X 7.95 X 5.60 MM**

**GRADING RESULTS**

Carat Weight **5.16 CARATS**  
Color Grade **FANCY VIVID PINK**  
Clarity Grade **VVS 2**



**ADDITIONAL GRADING INFORMATION**

Polish **EXCELLENT**  
Symmetry **EXCELLENT**  
Fluorescence **SLIGHT**  
Inscription(s) **IGI LG651435490**

Comments: This Laboratory Grown Diamond was created by Chemical Vapor Deposition (CVD) growth process. Indications of post-growth treatment.



**IGI**

September 9, 2024  
IGI Report Number **LG651435490**  
Description **LABORATORY GROWN DIAMOND**  
Shape and Cutting Style **CUT CORNERED RECTANGULAR  
MODIFIED BRILLIANT**  
Measurements **11.51 X 7.95 X 5.60 MM**

**GRADING RESULTS**

Carat Weight **5.16 CARATS**  
Color Grade **FANCY VIVID PINK**  
Clarity Grade **VVS 2**

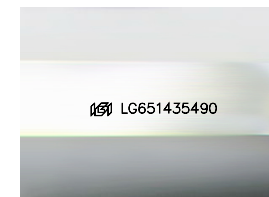
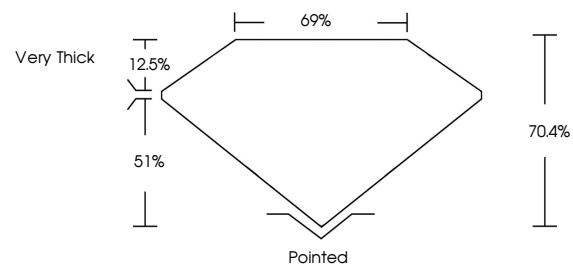
**ADDITIONAL GRADING INFORMATION**

Polish **EXCELLENT**  
Symmetry **EXCELLENT**  
Fluorescence **SLIGHT**

Inscription(s) **IGI LG651435490**

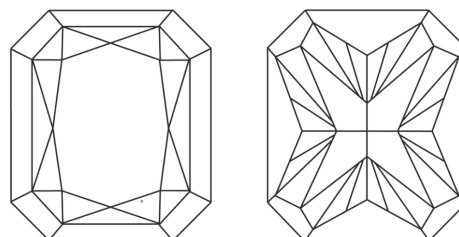
Comments: This Laboratory Grown Diamond was created by Chemical Vapor Deposition (CVD) growth process. Indications of post-growth treatment.

**PROPORTIONS**



Sample Image Used

**CLARITY CHARACTERISTICS**



**KEY TO SYMBOLS**

Red symbols indicate internal characteristics.  
Green symbols indicate external characteristics.

**COLOR**

D E F G H I J Faint Very Light Light

**CLARITY**

IF VS<sup>1-2</sup> VS<sup>1-2</sup> SI<sup>1-2</sup> I<sup>1-3</sup>

Internally Flawless Very Very Slightly Included Very Slightly Included Slightly Included Included

September 9, 2024  
IGI Report No LG651435490  
CUT CORNERED RECT. MODIFIED BRILLIANT  
11.51 X 7.95 X 5.60 MM  
5.16 CARATS  
FANCY VIVID PINK  
VVS 2  
70.4%  
69%  
Very Thick  
Pointed  
EXCELLENT  
EXCELLENT  
SLIGHT  
IGI LG651435490

Comments: This Laboratory Grown Diamond was created by Chemical Vapor Deposition (CVD) growth process. Indications of post-growth treatment.