



ELECTRONIC COPY

LG651435493
Report verification at igi.org



September 9, 2024
IGI Report Number **LG651435493**
Description **LABORATORY GROWN DIAMOND**
Shape and Cutting Style **CUSHION MODIFIED BRILLIANT**
Measurements **12.08 X 8.56 X 5.79 MM**
GRADING RESULTS
Carat Weight **5.53 CARATS**
Color Grade **FANCY VIVID PINK**
Clarity Grade **VS 2**

LABORATORY GROWN DIAMOND REPORT

September 9, 2024
IGI Report Number **LG651435493**
Description **LABORATORY GROWN DIAMOND**
Shape and Cutting Style **CUSHION MODIFIED BRILLIANT**
Measurements **12.08 X 8.56 X 5.79 MM**

GRADING RESULTS

Carat Weight **5.53 CARATS**
Color Grade **FANCY VIVID PINK**
Clarity Grade **VS 2**

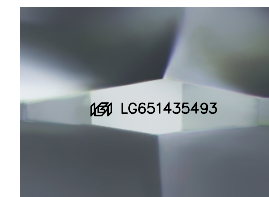
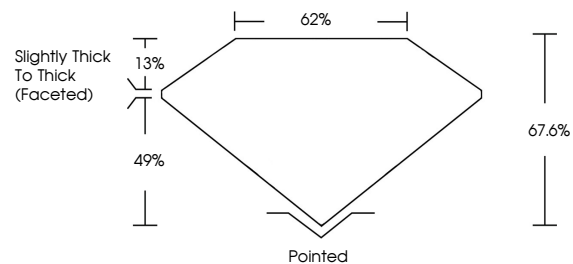
ADDITIONAL GRADING INFORMATION

Polish **EXCELLENT**
Symmetry **EXCELLENT**
Fluorescence **SLIGHT**
Inscription(s) **LG651435493**

Comments: This Laboratory Grown Diamond was created by Chemical Vapor Deposition (CVD) growth process.
Indications of post-growth treatment.

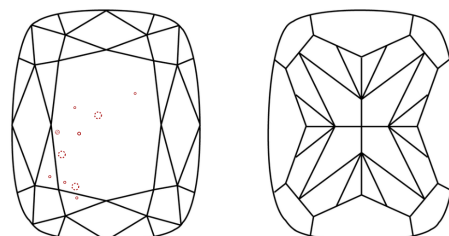
Secondary color: Brown

PROPORTIONS



Sample Image Used

CLARITY CHARACTERISTICS



KEY TO SYMBOLS

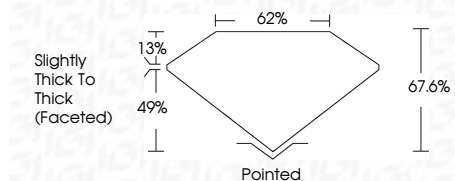
Red symbols indicate internal characteristics.
Green symbols indicate external characteristics.

COLOR

D E F G H I J Faint Very Light Light

CLARITY

IF	VS ¹⁻²	VS ¹⁻²	SI ¹⁻²	I ¹⁻³
Internally Flawless	Very Very Slightly Included	Very Slightly Included	Slightly Included	Included



ADDITIONAL GRADING INFORMATION

Polish **EXCELLENT**
Symmetry **EXCELLENT**
Fluorescence **SLIGHT**
Inscription(s) **LG651435493**
Comments: This Laboratory Grown Diamond was created by Chemical Vapor Deposition (CVD) growth process.
Indications of post-growth treatment.
Secondary color: Brown



September 9, 2024
IGI Report No **LG651435493**
CUSHION MODIFIED BRILLIANT
12.08 X 8.56 X 5.79 MM
Carat Weight **5.53 CARATS**
Color Grade **FANCY VIVID PINK**
Clarity Grade **VS 2**
Depth **67.6%**
Table **62%**
Girdle **Slightly Thick To Thick (Faceted)**
Culet **Pointed**
Polish **EXCELLENT**
Symmetry **EXCELLENT**
Fluorescence **SLIGHT**
Inscription(s) **LG651435493**
Comments: This Laboratory Grown Diamond was created by Chemical Vapor Deposition (CVD) growth process.
Indications of post-growth treatment.
Secondary color: Brown