



**ELECTRONIC COPY**

## LABORATORY GROWN DIAMOND REPORT

September 12, 2024	
IGI Report Number	LG651470422
Description	LABORATORY GROWN DIAMOND
Shape and Cutting Style	SQUARE CUSHION MODIFIED BRILLIANT
Measurements	7.46 X 7.39 X 4.97 MM

## GRADING RESULTS

Carat Weight	2.68 CARATS
Color Grade	FANCY INTENSE YELLOW
Clarity Grade	VS 1

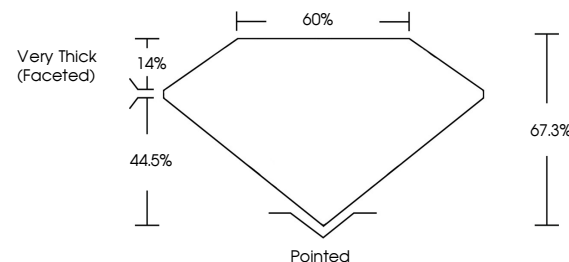
### ADDITIONAL GRADING INFORMATION

Polish	EXCELLENT
Symmetry	EXCELLENT
Fluorescence	NONE
Inscription(s)	15 LG651470422

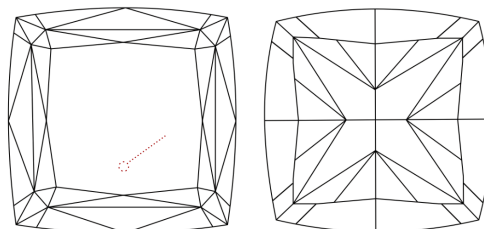
Comments: This Laboratory Grown Diamond was created by Chemical Vapor Deposition (CVD) growth process.

LG651470422  
Report verification at [lgi.org](https://lgi.org)

## PROPORTIONS

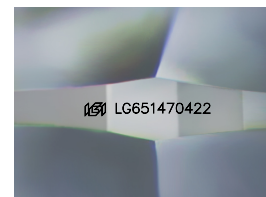


## CLARITY CHARACTERISTICS



## KEY TO SYMBOLS

Red symbols indicate internal characteristics.  
Green symbols indicate external characteristics.



Sample Image Used

**COLOR**

D E F G H I J Faint Very Light Light

## CLARITY

IF	VS <sup>1,2</sup>	VS <sup>1,2</sup>	SI <sup>1,2</sup>	I <sup>1,3</sup>
Internally Flawless	Very Very Slightly Included	Very Slightly Included	Slightly Included	Included



© IGI 2020, International Gemological Institute

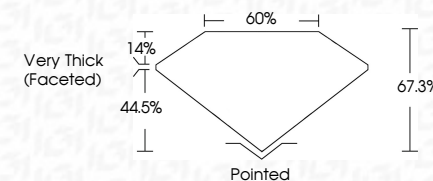
FD - 10 20

**www.igi.org**

## LABORATORY GROWN DIAMOND REPORT



September 12, 2024	
IGI Report Number	LG651470422
Description	LABORATORY GROWN DIAMOND
Shape and Cutting Style	SQUARE CUSHION MODIFIED BRILLIANT
Measurements	7.46 X 7.39 X 4.97 MM
GRADING RESULTS	
Carat Weight	2.68 CARATS
Color Grade	FANCY INTENSE YELLOW
Clarity Grade	VS 1



### ADDITIONAL GRADING INFORMATION

Polish	EXCELLENT
Symmetry	EXCELLENT
Fluorescence	NONE
Inscription(s)	(15) LG651470422

Comments: This Laboratory Grown Diamond was created by Chemical Vapor Deposition (CVD) growth process.



September 12, 2024	2.68 CARATS	VS	Polished
Report No. LG56147022	Color Grade	Depth	EXCELLENT
SQUARE CUSHION MODIFIED BRILLIANT	FANCY INTENSE YELLOW	Table	NO FLUORESCENCE
4.46 X 3.93 X 4.77 MM	Carat Weight	Grade	100% LG56147004
	Color Grade	View Thick Facet(s)	
	Clarity Grade	Clarity	
	Color	Symmetry	
	Fluorescence	Fluorescence	
	Inclusion(s)		

Comments:  
This Laboratory Grown Diamond was  
analyzed by chemical vapor deposition  
(CVD) method.