



ELECTRONIC COPY

LG653409110
Report verification at igi.org

LABORATORY GROWN DIAMOND REPORT

October 23, 2024
IGI Report Number **LG653409110**

Description **LABORATORY GROWN DIAMOND**

Shape and Cutting Style **CUT CORNERED RECTANGULAR
MODIFIED BRILLIANT**

Measurements **8.91 X 6.21 X 4.23 MM**

GRADING RESULTS

Carat Weight **2.13 CARATS**

Color Grade **F**

Clarity Grade **VS 1**

ADDITIONAL GRADING INFORMATION

Polish **EXCELLENT**

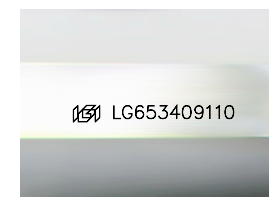
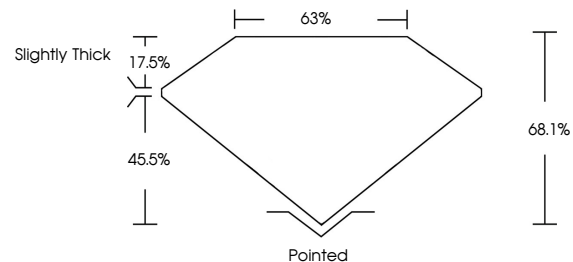
Symmetry **EXCELLENT**

Fluorescence **NONE**

Inscription(s) **IGI LG653409110**

Comments: This Laboratory Grown Diamond was created by Chemical Vapor Deposition (CVD) growth process.
Type IIa

PROPORTIONS



Sample Image Used

COLOR

D E F G H I J Faint Very Light Light

CLARITY

| IF | VS ¹⁻² | VS ¹⁻² | SI ¹⁻² | I ¹⁻³ |
|---------------------|-----------------------------|------------------------|-------------------|------------------|
| Internally Flawless | Very Very Slightly Included | Very Slightly Included | Slightly Included | Included |



October 23, 2024

IGI Report Number **LG653409110**

Description **LABORATORY GROWN DIAMOND**

Shape and Cutting Style **CUT CORNERED
RECTANGULAR MODIFIED
BRILLIANT**

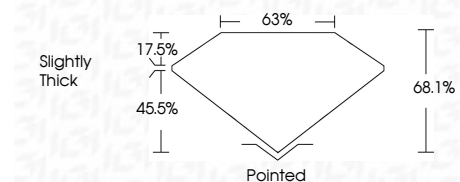
Measurements **8.91 X 6.21 X 4.23 MM**

GRADING RESULTS

Carat Weight **2.13 CARATS**

Color Grade **F**

Clarity Grade **VS 1**



ADDITIONAL GRADING INFORMATION

Polish **EXCELLENT**

Symmetry **EXCELLENT**

Fluorescence **NONE**

Inscription(s) **IGI LG653409110**

Comments: This Laboratory Grown Diamond was created by Chemical Vapor Deposition (CVD) growth process.
Type IIa



IGI



October 23, 2024
IGI Report No. LG653409110
CUT CORNERED RECT. MODIFIED BRILLIANT
8.91 X 6.21 X 4.23 MM
2.13 CARATS
F
VS 1
68.1%
63%
Slightly Thick
Pointed
EXCELLENT
EXCELLENT
NONE
IGI LG653409110
Comments: This Laboratory Grown Diamond was created by Chemical Vapor Deposition (CVD) growth process.
Type IIa