



ELECTRONIC COPY

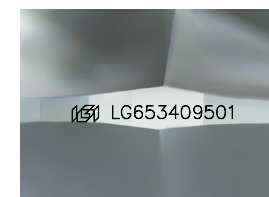
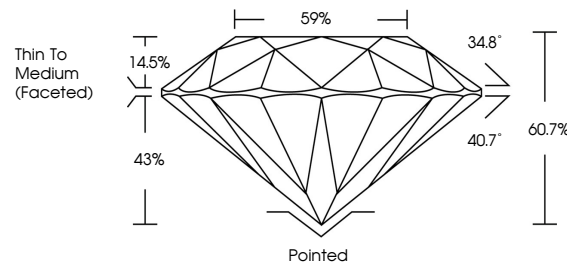
LG653409501
Report verification at igi.org



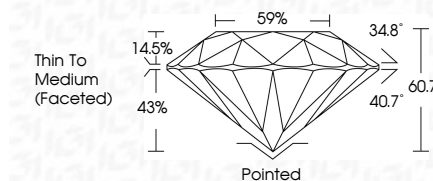
October 15, 2024
IGI Report Number LG653409501
Description LABORATORY GROWN DIAMOND
Shape and Cutting Style ROUND BRILLIANT
Measurements 8.52 - 8.60 X 5.20 MM
GRADING RESULTS
Carat Weight 2.35 CARATS
Color Grade F
Clarity Grade VVS 2
Cut Grade IDEAL

October 15, 2024
IGI Report Number LG653409501
Description LABORATORY GROWN DIAMOND
Shape and Cutting Style ROUND BRILLIANT
Measurements 8.52 - 8.60 X 5.20 MM
GRADING RESULTS
Carat Weight 2.35 CARATS
Color Grade F
Clarity Grade VVS 2
Cut Grade IDEAL

PROPORTIONS



Sample Image Used



ADDITIONAL GRADING INFORMATION

Polish EXCELLENT
Symmetry EXCELLENT
Fluorescence NONE
Inscription(s) LG653409501

Comments: This Laboratory Grown Diamond was created by Chemical Vapor Deposition (CVD) growth process. Type IIa

COLOR

D E F G H I J Faint Very Light Light

CLARITY

IF VS 1-2 VS 1-2 SI 1-2 I 1-3
Internally Flawless Very Very Slightly Included Very Slightly Included Slightly Included Included

ADDITIONAL GRADING INFORMATION

Polish EXCELLENT
Symmetry EXCELLENT
Fluorescence NONE
Inscription(s) LG653409501
Comments: This Laboratory Grown Diamond was created by Chemical Vapor Deposition (CVD) growth process. Type IIa



October 15, 2024
IGI Report No LG653409501
ROUND BRILLIANT
8.52 - 8.60 X 5.20 MM
2.35 CARATS
Color Grade F
Clarity Grade VVS 2
Cut Grade IDEAL
Depth 60.7%
Table 59%
Thin To Medium (Faceted)
Culet Pointed
Polish EXCELLENT
Symmetry EXCELLENT
Fluorescence NONE
Inscription(s) IGI LG653409501
Comments: This Laboratory Grown Diamond was created by Chemical Vapor Deposition (CVD) growth process. Type IIa