



**ELECTRONIC COPY**

LG653447617  
Report verification at igi.org



September 25, 2024

IGI Report Number **LG653447617**

Description **LABORATORY GROWN DIAMOND**

Shape and Cutting Style **CUT CORNERED  
RECTANGULAR MODIFIED  
BRILLIANT**

Measurements **11.36 X 8.96 X 6.41 MM**

**GRADING RESULTS**

Carat Weight **6.57 CARATS**

Color Grade **FANCY VIVID PINK**

Clarity Grade **VS 1**

September 25, 2024  
IGI Report Number **LG653447617**  
Description **LABORATORY GROWN DIAMOND**  
Shape and Cutting Style **CUT CORNERED RECTANGULAR  
MODIFIED BRILLIANT**  
Measurements **11.36 X 8.96 X 6.41 MM**

**GRADING RESULTS**

Carat Weight **6.57 CARATS**

Color Grade **FANCY VIVID PINK**

Clarity Grade **VS 1**

**ADDITIONAL GRADING INFORMATION**

Polish **VERY GOOD**

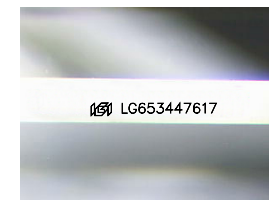
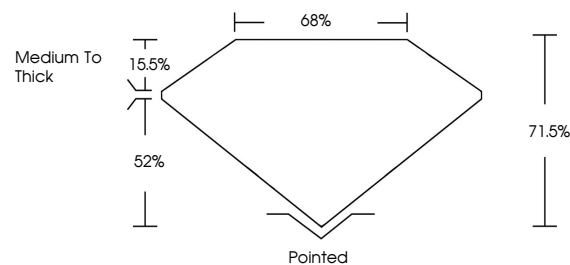
Symmetry **VERY GOOD**

Fluorescence **SLIGHT**

Inscription(s) **IGI LG653447617**

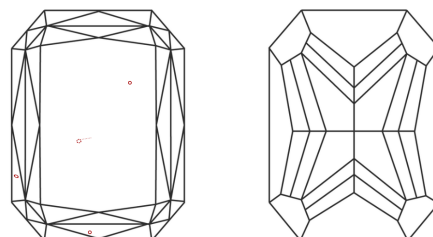
Comments: This Laboratory Grown Diamond was created by Chemical Vapor Deposition (CVD) growth process. Indications of post-growth treatment.

**PROPORTIONS**



Sample Image Used

**CLARITY CHARACTERISTICS**



**KEY TO SYMBOLS**

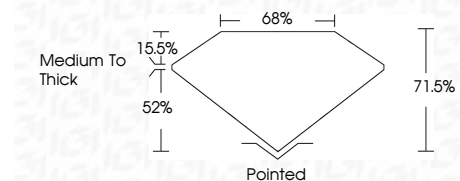
Red symbols indicate internal characteristics.  
Green symbols indicate external characteristics.

**COLOR**

D E F G H I J Faint Very Light Light

**CLARITY**

IF	VS <sup>1-2</sup>	VS <sup>1-2</sup>	SI <sup>1-2</sup>	I <sup>1-3</sup>
Internally Flawless	Very Very Slightly Included	Very Slightly Included	Slightly Included	Included



**ADDITIONAL GRADING INFORMATION**

Polish **VERY GOOD**

Symmetry **VERY GOOD**

Fluorescence **SLIGHT**

Inscription(s) **IGI LG653447617**

Comments: This Laboratory Grown Diamond was created by Chemical Vapor Deposition (CVD) growth process. Indications of post-growth treatment.



**IGI**



September 25, 2024	IGI Report No LG653447617	CUT CORNERED RECT. MODIFIED BRILLIANT	11.36 X 8.96 X 6.41 MM	6.57 CARATS	FANCY VIVID PINK	VS 1	71.5%	65%	Medium to Thick	Pointed	VERY GOOD	VERY GOOD	SLIGHT	IGI LG653447617
Comments: This Laboratory Grown Diamond was created by Chemical Vapor Deposition (CVD) growth process. Indications of post-growth treatment.														