



ELECTRONIC COPY

LABORATORY GROWN DIAMOND REPORT

October 4, 2024  
IGI Report Number **LG654407920**  
Description **LABORATORY GROWN DIAMOND**  
Shape and Cutting Style **CUT CORNERED RECTANGULAR MODIFIED BRILLIANT**  
Measurements **8.76 X 5.68 X 3.74 MM**

GRADING RESULTS

Carat Weight **1.62 CARAT**  
Color Grade **FANCY VIVID YELLOW**  
Clarity Grade **VS 2**

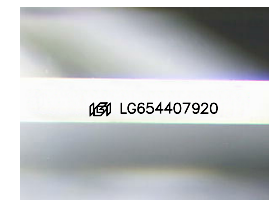
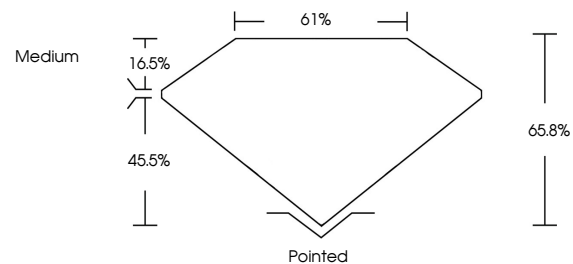
ADDITIONAL GRADING INFORMATION

Polish **EXCELLENT**  
Symmetry **EXCELLENT**  
Fluorescence **NONE**  
Inscription(s) **IGI LG654407920**

Comments: This Laboratory Grown Diamond was created by Chemical Vapor Deposition (CVD) growth process.

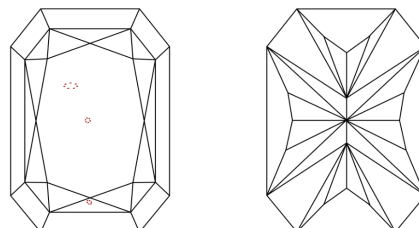
Secondary color: Brown

PROPORTIONS



Sample Image Used

CLARITY CHARACTERISTICS



KEY TO SYMBOLS

Red symbols indicate internal characteristics.  
Green symbols indicate external characteristics.

COLOR

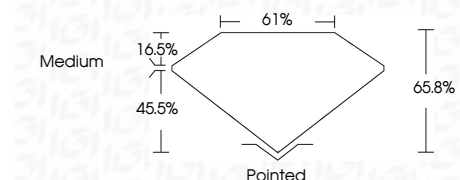
D E F G H I J Faint Very Light Light

CLARITY

IF WVS 1-2 VS 1-2 SI 1-2 I 1-3  
Internally Flawless Very Very Slightly Included Very Slightly Included Slightly Included Included



October 4, 2024  
IGI Report Number **LG654407920**  
Description **LABORATORY GROWN DIAMOND**  
Shape and Cutting Style **CUT CORNERED RECTANGULAR MODIFIED BRILLIANT**  
Measurements **8.76 X 5.68 X 3.74 MM**  
GRADING RESULTS  
Carat Weight **1.62 CARAT**  
Color Grade **FANCY VIVID YELLOW**  
Clarity Grade **VS 2**



ADDITIONAL GRADING INFORMATION

Polish **EXCELLENT**  
Symmetry **EXCELLENT**  
Fluorescence **NONE**  
Inscription(s) **IGI LG654407920**  
Comments: This Laboratory Grown Diamond was created by Chemical Vapor Deposition (CVD) growth process.  
Secondary color: Brown



October 4, 2024  
IGI Report No **LG654407920**  
CUT **CORNERED RECT. MODIFIED BRILLIANT**  
8.76 X 5.68 X 3.74 MM  
1.62 CARAT  
Color Grade **FANCY VIVID YELLOW**  
VS 2  
65.8%  
61%  
Medium  
Pointed  
EXCELLENT  
EXCELLENT  
NONE  
IGI LG654407920

Comments: This Laboratory Grown Diamond was created by Chemical Vapor Deposition (CVD) growth process.  
Secondary color: Brown