

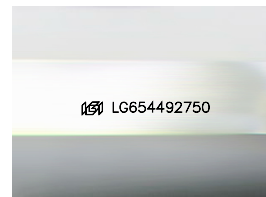
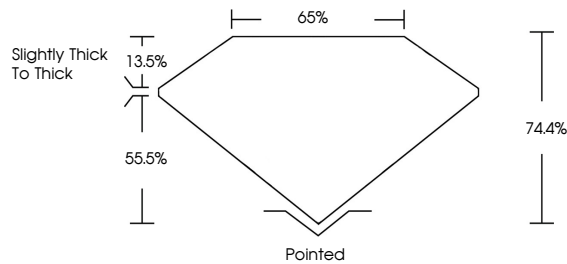


**INTERNATIONAL
GEMOLOGICAL
INSTITUTE**

ELECTRONIC COPY

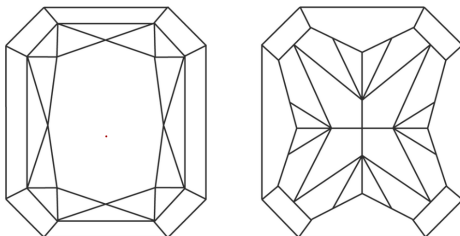
LG654492750
Report verification at igi.org

PROPORTIONS



Sample Image Used

CLARITY CHARACTERISTICS



KEY TO SYMBOLS

Red symbols indicate internal characteristics.
Green symbols indicate external characteristics.

COLOR

D E F G H I J Faint Very Light Light

CLARITY

IF	WVS ¹⁻²	VS ¹⁻²	SI ¹⁻²	I ¹⁻³
Internally Flawless	Very Very Slightly Included	Very Slightly Included	Slightly Included	Included



© IGI 2020, International Gemological Institute

FD - 10 20

THIS DOCUMENT WAS PRODUCED WITH THE FOLLOWING SECURITY MEASURES: SPECIAL DOCUMENT PAPER, INK SCREENS, WATERMARK, BACKGROUND DESIGNS, HOLOGRAM AND OTHER SECURITY FEATURES NOT LISTED AND DO EXCEED DOCUMENT SECURITY INDUSTRY GUIDELINES

LABORATORY GROWN DIAMOND REPORT



October 5, 2024

IGI Report Number **LG654492750**

Description	LABORATORY GROWN DIAMOND
-------------	--------------------------

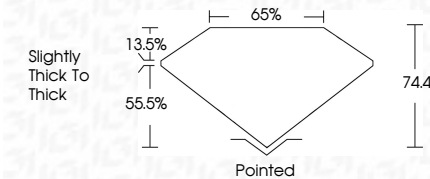
Shape and Cutting Style

CUT CORNERED
RECTANGULAR MODIFIED
BRILLIANT

Measurements **7.31 X 4.92 X 3.66 MM**

GRADING RESULTS

Carat Weight **1.17 CARAT**

Color Grade **FANCY INTENSE YELLOW**Clarity Grade WS 2

ADDITIONAL GRADING INFORMATION

Polish **EXCELLENT**Symmetry **EXCELLENT**Fluorescence **NONE**Inscription(s) LG65449275

Comments: This Laboratory Grown Diamond was created by Chemical Vapor Deposition (CVD) growth process.

Secondary color: Brown



IG

October 5, 2024		
IGI Report No LG6A492780		
OUT CORNERED RECT. MODIFIED BRILLIANT		
		
1.17 CARAT		
FANCY INTENSE YELLOW	VVS 2	Poished
	74.4%	EXCELLENT
	65%	EXCELLENT
Slightly Thick to Thick	NONE	
	#89 LG6A492780	
Comments:		
This Laboratory Grown Diamond was created by Chemical Vapor Deposition (CVD) growth process.		
Secondary color: Brown		