



ELECTRONIC COPY

LG654492758
Report verification at igi.org



October 5, 2024

IGI Report Number **LG654492758**

Description **LABORATORY GROWN DIAMOND**

Shape and Cutting Style **CUT CORNERED
RECTANGULAR MODIFIED
BRILLIANT**

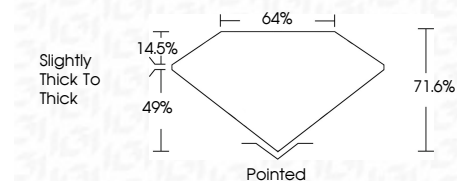
Measurements **6.91 X 4.62 X 3.31 MM**

GRADING RESULTS

Carat Weight **1.02 CARAT**

Color Grade **FANCY YELLOW**

Clarity Grade **VVS 2**



ADDITIONAL GRADING INFORMATION

Polish **EXCELLENT**

Symmetry **EXCELLENT**

Fluorescence **NONE**

Inscription(s) **IGI LG654492758**

Comments: This Laboratory Grown Diamond was created by Chemical Vapor Deposition (CVD) growth process.



October 5, 2024	IGI Report No LG654492758	CUT CORNERED RECT. MODIFIED BRILLIANT
6.91 X 4.62 X 3.31 MM	1.02 CARAT	FANCY YELLOW
Color Grade	VVS 2	Clarity Grade
Depth	71.6%	Table
Girdle	14.5%	Slightly thick to thick
Culet	Pointed	Polish
Symmetry	EXCELLENT	Fluorescence
Inscription(s)	NONE	IGI LG654492758

Comments: This Laboratory Grown Diamond was created by Chemical Vapor Deposition (CVD) growth process.

LABORATORY GROWN DIAMOND REPORT

October 5, 2024

IGI Report Number **LG654492758**

Description **LABORATORY GROWN DIAMOND**

Shape and Cutting Style **CUT CORNERED RECTANGULAR
MODIFIED BRILLIANT**

Measurements **6.91 X 4.62 X 3.31 MM**

GRADING RESULTS

Carat Weight **1.02 CARAT**

Color Grade **FANCY YELLOW**

Clarity Grade **VVS 2**

ADDITIONAL GRADING INFORMATION

Polish **EXCELLENT**

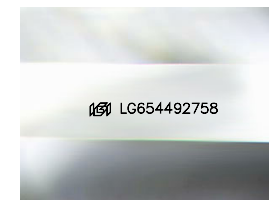
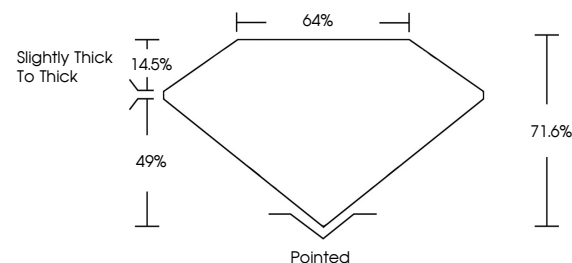
Symmetry **EXCELLENT**

Fluorescence **NONE**

Inscription(s) **IGI LG654492758**

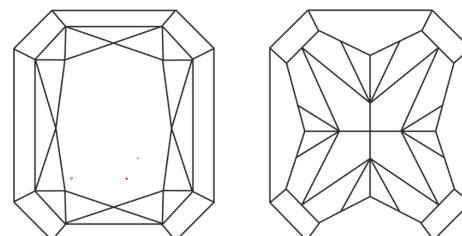
Comments: This Laboratory Grown Diamond was created by Chemical Vapor Deposition (CVD) growth process.

PROPORTIONS



Sample Image Used

CLARITY CHARACTERISTICS



KEY TO SYMBOLS

Red symbols indicate internal characteristics.
Green symbols indicate external characteristics.

COLOR

D E F G H I J Faint Very Light Light

CLARITY

IF	VS ¹⁻²	VS ¹⁻²	SI ¹⁻²	I ¹⁻³
Internally Flawless	Very Very Slightly Included	Very Slightly Included	Slightly Included	Included

