



ELECTRONIC COPY

LG655411360
Report verification at igi.org



October 8, 2024
IGI Report Number LG655411360
Description LABORATORY GROWN DIAMOND
Shape and Cutting Style CUT CORNERED RECTANGULAR MODIFIED BRILLIANT
Measurements 9.36 X 6.35 X 4.53 MM
GRADING RESULTS
Carat Weight 2.67 CARATS
Color Grade FANCY YELLOW
Clarity Grade VVS 2

LABORATORY GROWN DIAMOND REPORT

October 8, 2024
IGI Report Number LG655411360
Description LABORATORY GROWN DIAMOND
Shape and Cutting Style CUT CORNERED RECTANGULAR MODIFIED BRILLIANT
Measurements 9.36 X 6.35 X 4.53 MM

GRADING RESULTS

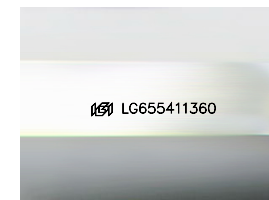
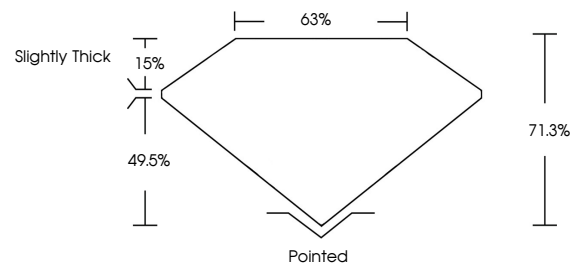
Carat Weight 2.67 CARATS
Color Grade FANCY YELLOW
Clarity Grade VVS 2

ADDITIONAL GRADING INFORMATION

Polish EXCELLENT
Symmetry EXCELLENT
Fluorescence NONE
Inscription(s) LG655411360

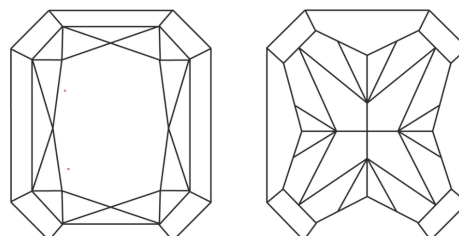
Comments: This Laboratory Grown Diamond was created by Chemical Vapor Deposition (CVD) growth process.

PROPORTIONS



Sample Image Used

CLARITY CHARACTERISTICS



KEY TO SYMBOLS

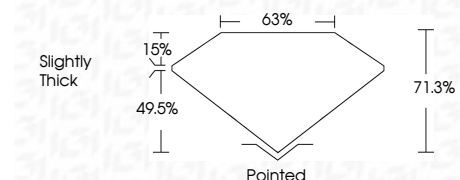
Red symbols indicate internal characteristics.
Green symbols indicate external characteristics.

COLOR

D E F G H I J Faint Very Light Light

CLARITY

Table mapping clarity grades (IF, VVS, VS, SI, I) to descriptions (Internally Flawless, Very Very Slightly Included, etc.)



ADDITIONAL GRADING INFORMATION

Polish EXCELLENT
Symmetry EXCELLENT
Fluorescence NONE
Inscription(s) LG655411360
Comments: This Laboratory Grown Diamond was created by Chemical Vapor Deposition (CVD) growth process.



October 8, 2024
IGI Report No LG655411360
CUT CORNERED RECT. MODIFIED BRILLIANT
9.36 X 6.35 X 4.53 MM
2.67 CARATS
FANCY YELLOW
VVS 2
71.0%
63%
Slightly Thick
Pointed
EXCELLENT
EXCELLENT
NONE
Inscription(s) LG655411360
Comments: This Laboratory Grown Diamond was created by Chemical Vapor Deposition (CVD) growth process.