



ELECTRONIC COPY

LG655431610
Report verification at igi.org



October 13, 2024

IGI Report Number **LG655431610**

Description **LABORATORY GROWN DIAMOND**

Shape and Cutting Style **PRINCESS CUT**

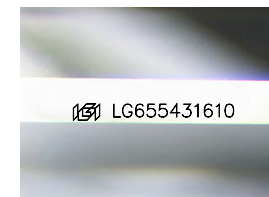
Measurements **7.89 X 7.60 X 5.71 MM**

GRADING RESULTS

Carat Weight **3.03 CARATS**

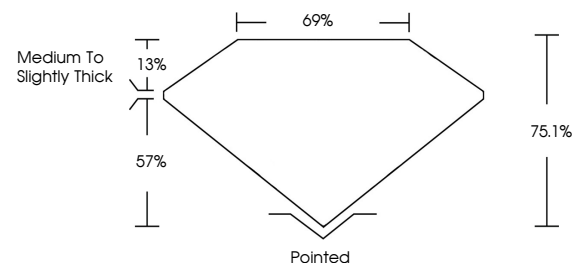
Color Grade **FANCY INTENSE PINK**

Clarity Grade **VS 1**

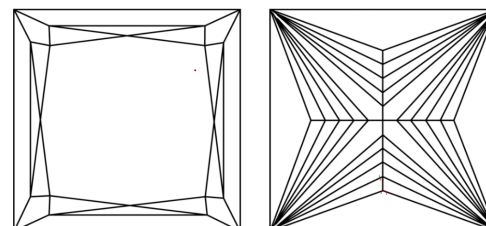


Sample Image Used

PROPORTIONS



CLARITY CHARACTERISTICS



KEY TO SYMBOLS

Red symbols indicate internal characteristics.
Green symbols indicate external characteristics.

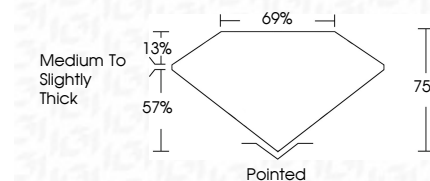
COLOR

D E F G H I J Faint Very Light Light

CLARITY

IF VS¹⁻² VS¹⁻² SI¹⁻² I¹⁻³

Internally Flawless Very Very Slightly Included Very Slightly Included Slightly Included Included



ADDITIONAL GRADING INFORMATION

Polish **VERY GOOD**

Symmetry **VERY GOOD**

Fluorescence **SLIGHT**

Inscription(s) **IGI LG655431610**

Comments: This Laboratory Grown Diamond was created by Chemical Vapor Deposition (CVD) growth process. Indications of post-growth treatment.



IGI



October 13, 2024
IGI Report No. LG655431610
PRINCESS CUT

3.03 CARATS
Carat Weight
FANCY INTENSE PINK
Color Grade

VS 1
Clarity Grade

7.89 X 7.60 X 5.71 MM
Depth 75.1%
Table 69%
Girdle Medium to Slightly Thick

Pointed
Culet
Polish VERY GOOD
Symmetry VERY GOOD
Fluorescence SLIGHT
Inscription(s) IGI LG655431610

Comments: This Laboratory Grown Diamond was created by Chemical Vapor Deposition (CVD) growth process. Indications of post-growth treatment.