



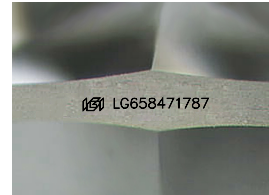
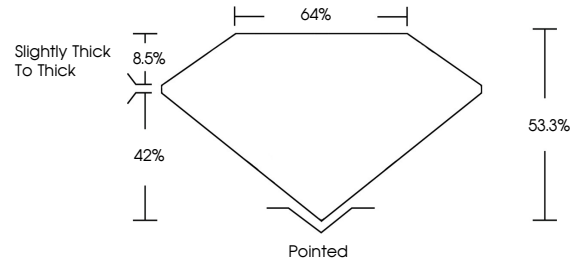
**INTERNATIONAL
GEMOLOGICAL
INSTITUTE**

ELECTRONIC COPY

LABORATORY GROWN DIAMOND REPORT

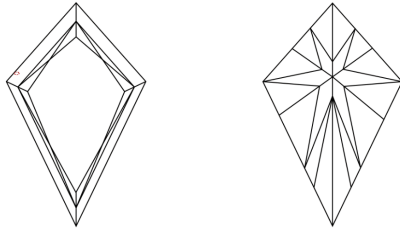
LG658471787
Report verification at igi.org

PROPORTIONS



Sample Image Used

CLARITY CHARACTERISTICS



KEY TO SYMBOLS

Red symbols indicate internal characteristics.
Green symbols indicate external characteristics.

COLOR

D E F G H I J Faint Very Light Light

CLARITY

IF	WVS ¹⁻²	VS ¹⁻²	SI ¹⁻²	I ¹⁻³
Internally Flawless	Very Very Slightly Included	Very Slightly Included	Slightly Included	Included



© IGI 2020, International Gemological Institute

FD - 10 20

www.igi.org

LABORATORY GROWN DIAMOND REPORT



October 18, 2024

IGI Report Number **LG658471787**

Description	LABORATORY GROWN DIAMOND
-------------	--------------------------

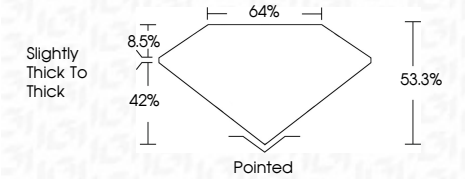
Shape and Cutting Style **KITE BRILLIANT CUT**

Measurements 10.15 X 6.74 X 3.59 MM

GRADING RESULTS

Carat Weight 1.09 CARAT

Color Grade	D
-------------	---

Clarity Grade **VVS 2**

ADDITIONAL GRADING INFORMATION

Polish **EXCELLENT**Symmetry **VERY GOOD**Fluorescence **NONE**Inscription(s)  LG658471787

Comments: This Laboratory Grown Diamond was created by Chemical Vapor Deposition (CVD) growth process.
Type IIa



IGI

October 18, 2024	10.15 x 6.74 x 3.69 MM	1.09 CARAT	
IGI Report No IGG58471787	Carat Weight		
KITE Brilliant CUT	Color Grade	D	
	Clarity Grade	VVS 2	
	Depth	63.3%	
	Table	64%	
	Girdle	Slightly Thick to Thick	
	Culet	Pointed	
	Polish	EXCELLENT	
	Symmetry	VERY GOOD	
	Fluorescence	NONE	
	Inscription(s)	IGI IGG58471787	

Comments: Laboratory Grown Diamond was created by Chemical Vapor Deposition (CVD) growth process.
Type IIa