



ELECTRONIC COPY

LG658471791
Report verification at igi.org



October 18, 2024

IGI Report Number **LG658471791**

Description **LABORATORY GROWN DIAMOND**

Shape and Cutting Style **KITE BRILLIANT CUT**

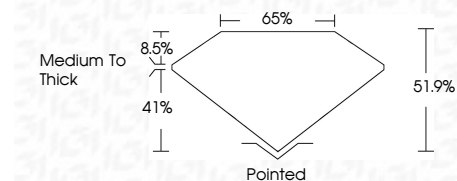
Measurements **10.20 X 6.78 X 3.52 MM**

GRADING RESULTS

Carat Weight **1.06 CARAT**

Color Grade **D**

Clarity Grade **VS 1**



ADDITIONAL GRADING INFORMATION

Polish **EXCELLENT**

Symmetry **EXCELLENT**

Fluorescence **NONE**

Inscription(s) **IGI LG658471791**

Comments: This Laboratory Grown Diamond was created by Chemical Vapor Deposition (CVD) growth process. Type IIa



October 18, 2024	IGI Report No LG658471791	KITE BRILLIANT CUT	1.06 CARAT	D	VS 1	51.9%	65%	Medium To Thick	Pointed	EXCELLENT	EXCELLENT	NONE	IGI LG658471791
<p>Comments: This Laboratory Grown Diamond was created by Chemical Vapor Deposition (CVD) growth process. Type IIa</p>													

LABORATORY GROWN DIAMOND REPORT

October 18, 2024

IGI Report Number **LG658471791**

Description **LABORATORY GROWN DIAMOND**

Shape and Cutting Style **KITE BRILLIANT CUT**

Measurements **10.20 X 6.78 X 3.52 MM**

GRADING RESULTS

Carat Weight **1.06 CARAT**

Color Grade **D**

Clarity Grade **VS 1**

ADDITIONAL GRADING INFORMATION

Polish **EXCELLENT**

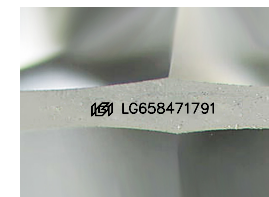
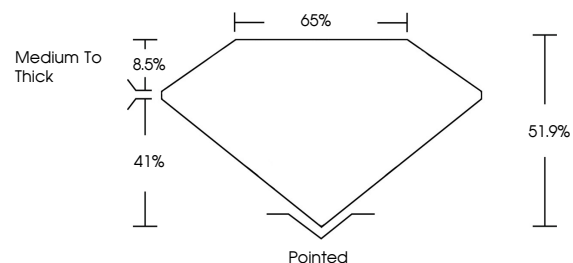
Symmetry **EXCELLENT**

Fluorescence **NONE**

Inscription(s) **IGI LG658471791**

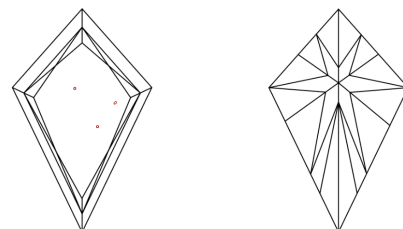
Comments: This Laboratory Grown Diamond was created by Chemical Vapor Deposition (CVD) growth process. Type IIa

PROPORTIONS



Sample Image Used

CLARITY CHARACTERISTICS



KEY TO SYMBOLS

Red symbols indicate internal characteristics.
Green symbols indicate external characteristics.

COLOR

D E F G H I J Faint Very Light Light

CLARITY

IF	VS ¹⁻²	VS ¹⁻²	SI ¹⁻²	I ¹⁻³
Internally Flawless	Very Very Slightly Included	Very Slightly Included	Slightly Included	Included

