



ELECTRONIC COPY

LG658476152
Report verification at igi.org



October 15, 2024
IGI Report Number LG658476152
Description LABORATORY GROWN DIAMOND
Shape and Cutting Style SQUARE CUSHION MODIFIED BRILLIANT
Measurements 6.38 X 6.19 X 4.06 MM
GRADING RESULTS
Carat Weight 1.51 CARAT
Color Grade FANCY VIVID PINK
Clarity Grade VVS 2

LABORATORY GROWN DIAMOND REPORT

October 15, 2024
IGI Report Number LG658476152
Description LABORATORY GROWN DIAMOND
Shape and Cutting Style SQUARE CUSHION MODIFIED BRILLIANT
Measurements 6.38 X 6.19 X 4.06 MM

GRADING RESULTS

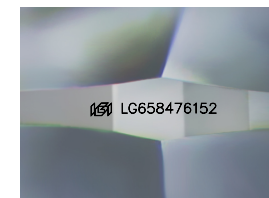
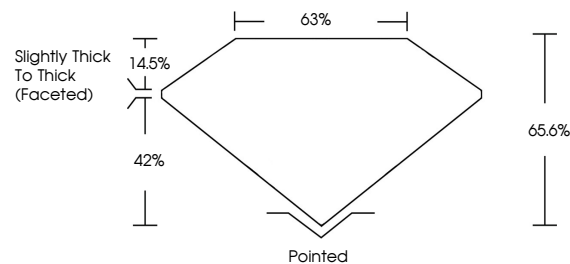
Carat Weight 1.51 CARAT
Color Grade FANCY VIVID PINK
Clarity Grade VVS 2

ADDITIONAL GRADING INFORMATION

Polish VERY GOOD
Symmetry VERY GOOD
Fluorescence SLIGHT
Inscription(s) LG658476152

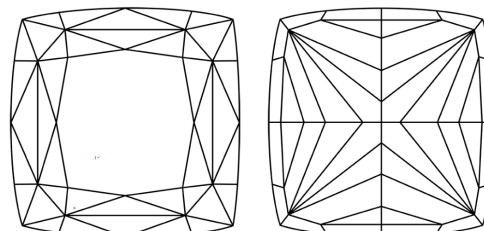
Comments: This Laboratory Grown Diamond was created by Chemical Vapor Deposition (CVD) growth process.
Indications of post-growth treatment.

PROPORTIONS



Sample Image Used

CLARITY CHARACTERISTICS



KEY TO SYMBOLS

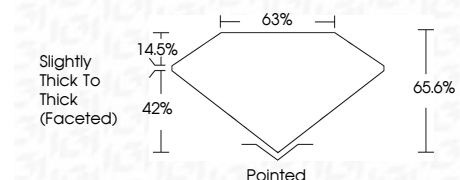
Red symbols indicate internal characteristics.
Green symbols indicate external characteristics.

COLOR

D E F G H I J Faint Very Light Light

CLARITY

Table with columns for clarity grades: IF, VS 1-2, VS 1-2, SI 1-2, I 1-3 and their corresponding descriptions: Internally Flawless, Very Very Slightly Included, Very Slightly Included, Slightly Included, Included.



ADDITIONAL GRADING INFORMATION

Polish VERY GOOD
Symmetry VERY GOOD
Fluorescence SLIGHT
Inscription(s) LG658476152
Comments: This Laboratory Grown Diamond was created by Chemical Vapor Deposition (CVD) growth process.
Indications of post-growth treatment.



IGI



October 15, 2024
IGI Report No LG658476152
SQUARE CUSHION MODIFIED BRILLIANT
6.38 X 6.19 X 4.06 MM
1.51 CARAT
FANCY VIVID PINK
VVS 2
65.6%
63%
Slightly Thick To Thick (Faceted)
Pointed
VERY GOOD
VERY GOOD
SLIGHT
LG658476152
Comments: This Laboratory Grown Diamond was created by Chemical Vapor Deposition (CVD) growth process.
Indications of post-growth treatment.